

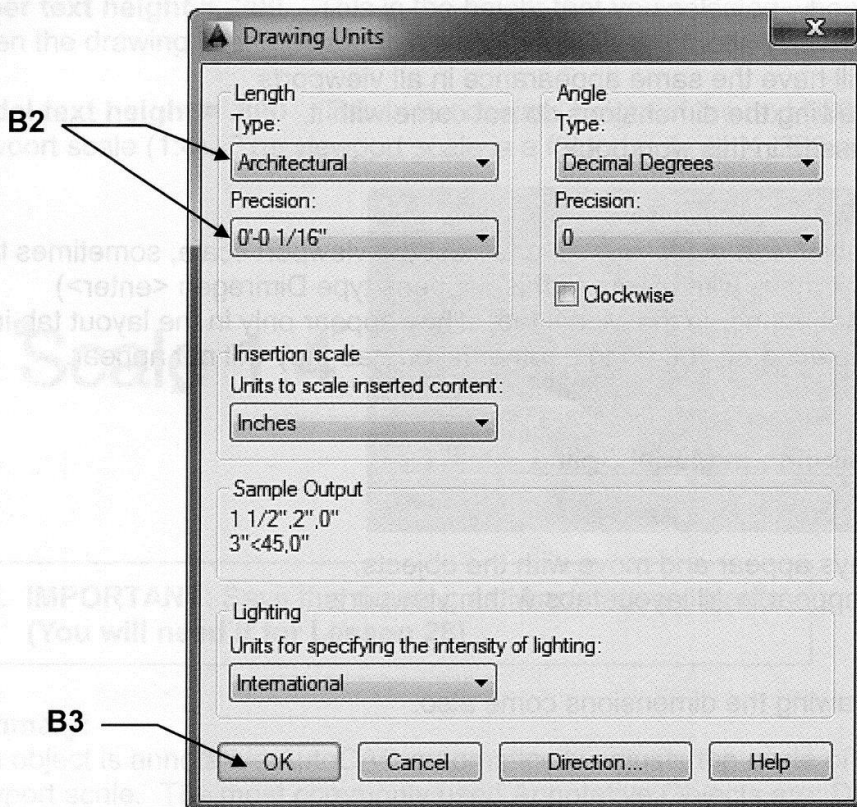
EXERCISE 27A

CREATE A MASTER FEET-INCHES SETUP TEMPLATE

The following instructions will guide you through creating a “Master” Feet-inches setup template. The “2015-Workbook Helper” is an example of a Master setup template. Once you have created this “Master” template, you just open it and draw. No more repetitive inputting of settings.

NEW SETTINGS

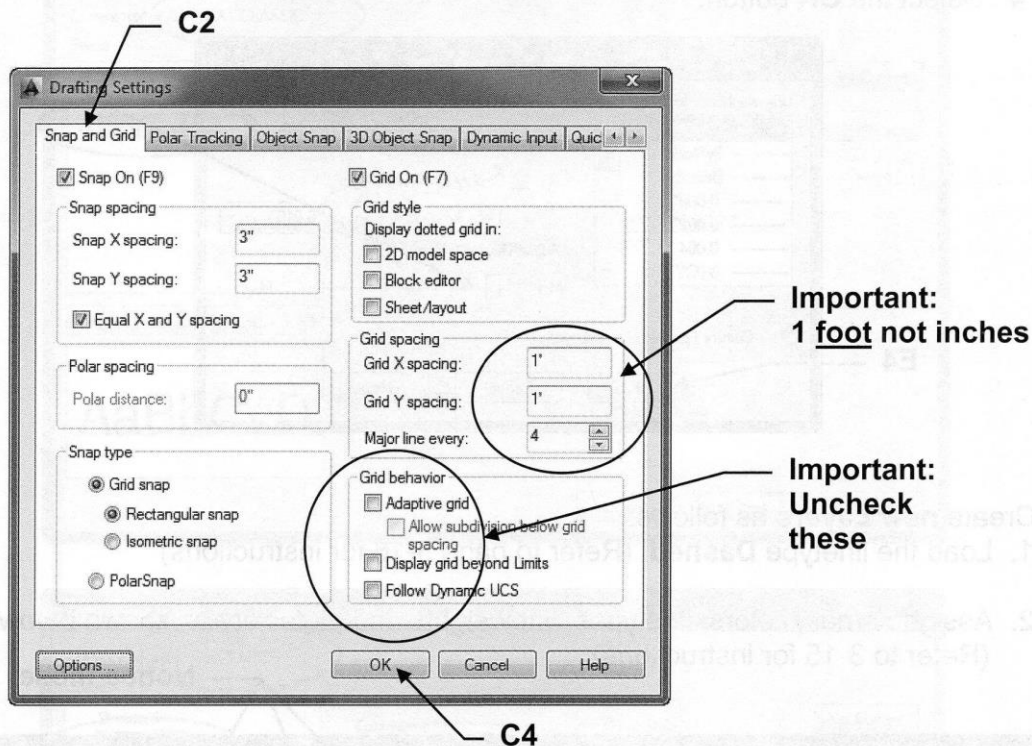
- A. Begin your drawing with a different template as follows:
 1. Select the **NEW** command.
 2. Select template file **acad.dwt** from the list of templates. (**Not acad3D.dwt**)
- B. Set the drawing **Units** as follows:
 1. Type **UNITS <enter>**
 2. Change the **Type** and **Precision** as shown
 3. Select **OK** button



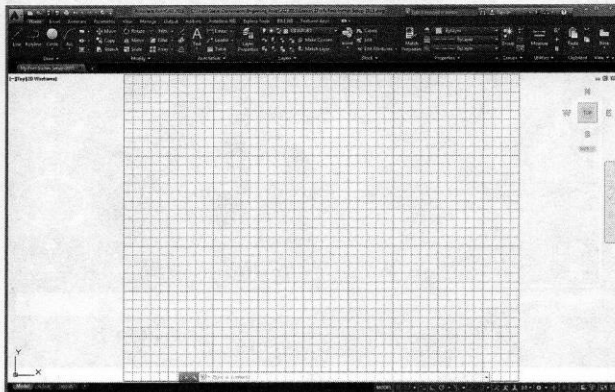
Continued on the next page...

EXERCISE 27A....continued

- C. Set the Grids and Snap as follows:
1. Type **DS<enter>**
 2. Select the **Snap and Grid** tab
 3. Change the settings as shown below.
 4. Select the **OK** button.



- D. Set the **Drawing Limits** (Size of the drawing area) as follows:
1. Type **Limits <enter>**
 2. Enter Lower left corner = 0'-0", 0'-0"
 3. Enter Upper right corner = **44'**, **34'** (Notice this is feet, not inches)
 4. Use "**ZOOM / ALL**" to view the new limits
 5. Set your **Grids** to **ON** to display the limits (drawing area).



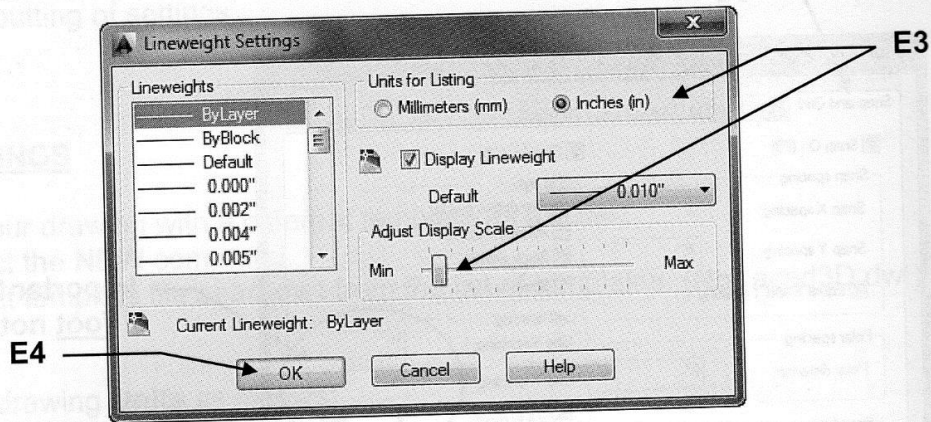
If your screen does not appear as shown here, check these:

- Did you use, **Zoom / All (D4)**?
- Is your grid spacing feet or inches?
- Is the **Grid ON**?

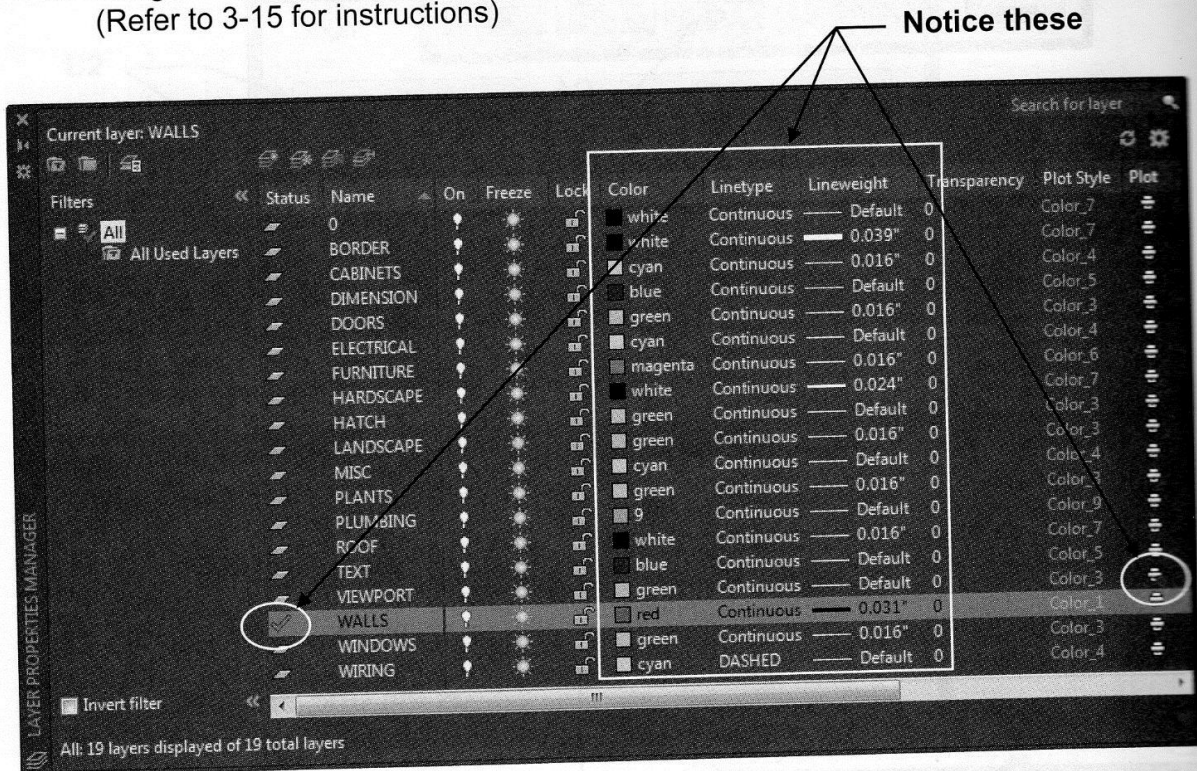
Continued on the next page...

EXERCISE 27A....continued

- E. Change **Lineweight** settings as follows:
1. Left click on Lineweight button down arrow ▼ on status line
 2. Select **Lineweight Settings**
 3. Change to inches and adjust the Display scale as shown below.
 4. Select the **OK** button.



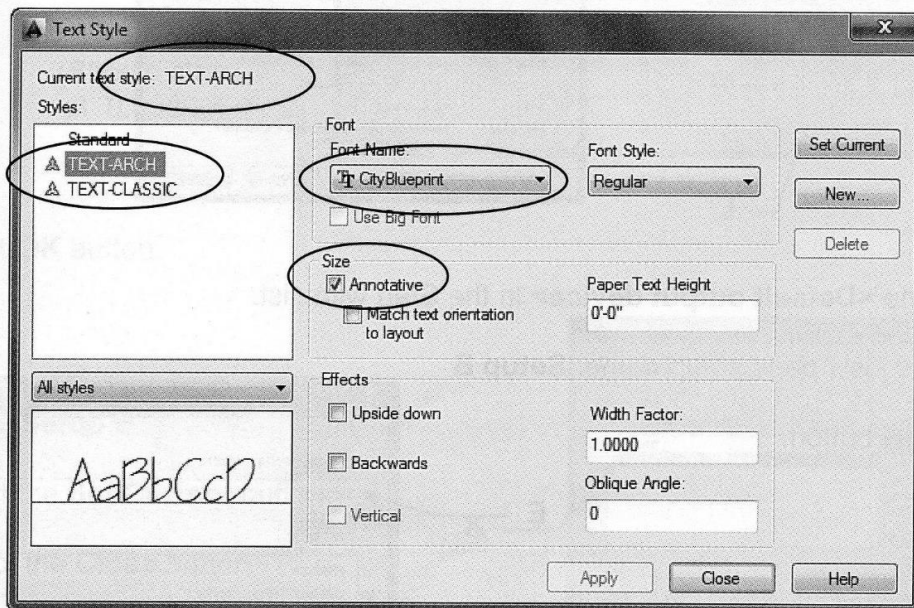
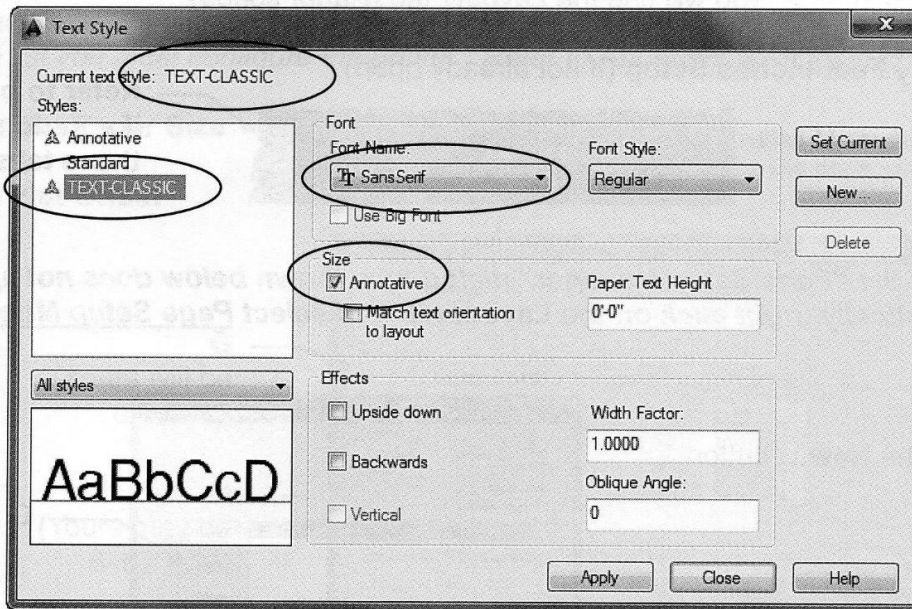
- F. Create **new Layers** as follows:
1. Load the linetype **Dashed**. (Refer to page 3-16 for instructions)
 2. Assign names, colors, linetypes, lineweights and plotability as shown below: (Refer to 3-15 for instructions)



Continued on the next page...

EXERCISE 27A....continued

- G. Create 2 new **Text Styles** as follows:
1. Select **Text Style** (Refer to page 25-2)
 2. Create the text style **Text-Classic** and **Text-Arch** using the settings shown below.



THIS NEXT STEP IS VERY IMPORTANT

- H. **Save** all the settings you just created as follows:
1. Save as: **My Feet-Inches Setup**
- I. Now continue on to **Exercise 27B**...you are not done yet.

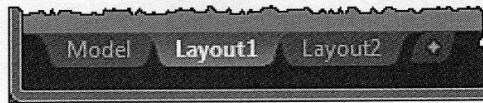
EXERCISE 27B

PAGE SETUP

Now you will select the printer and the paper size to use for printing.
You will use the Layout1 tab (Paper space).

A. Open **My Feet-Inches Setup** (If not already open)

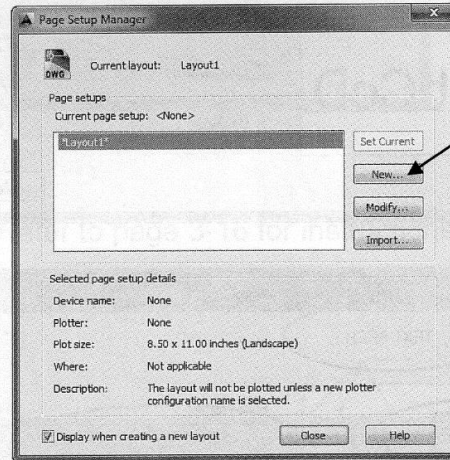
B. Select **Layout1** tab.



Refer to page 26-3 if you do not have these tabs.

Note: If the "Page Setup Manager" dialog box shown below does not appear automatically, right click on the Layout tab and select Page Setup Manager.

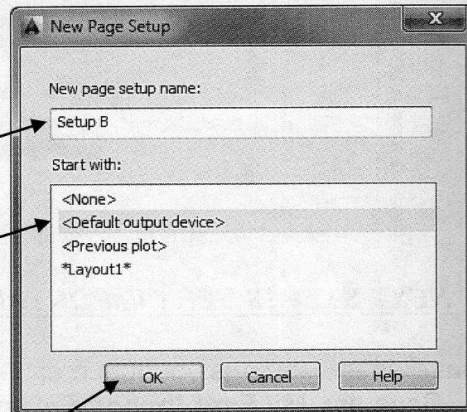
C. Select the **New...** button.



D. Select the **<Default output device>** in the Start with: list.

E. Enter the New page setup name: **Setup B**

F. Select **OK** button.



(I am assuming that your computer is attached to a printer. If not select Layout1)

Continued on the next page...

EXERCISE 27B....continued

This is where you will select the **print device, paper size** and the **plot offset**.

G. Select the **Printer / Plotter**

Note: Your current system printer should already be displayed here. If you prefer another, select the down arrow and select from the list. If the preferred printer is not in the list you must configure the printer. Refer to Appendix-A for instructions.)

H. Select the **Paper Size**

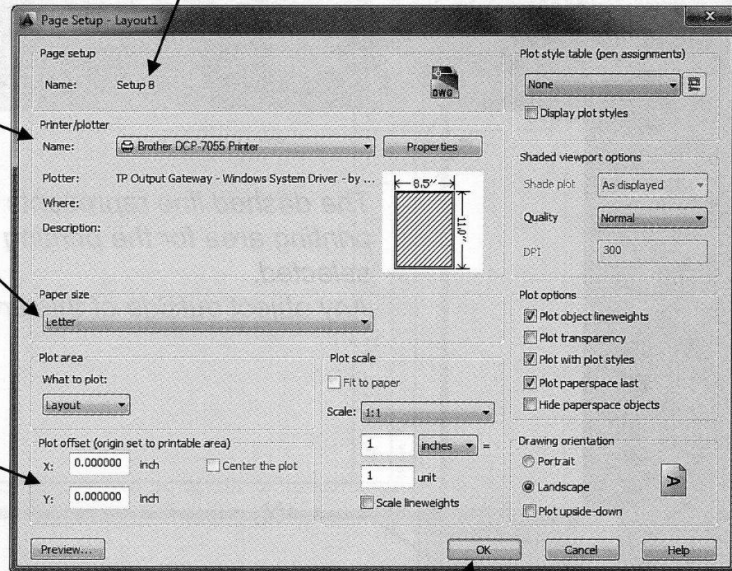
I. Select **Plot Offset**

Notice the name you entered is now displayed as the page setup name.

G
(Yours will be different)

H
(Yours may be 8-1/2 x 11)

I
(Should stay at 0.00000)

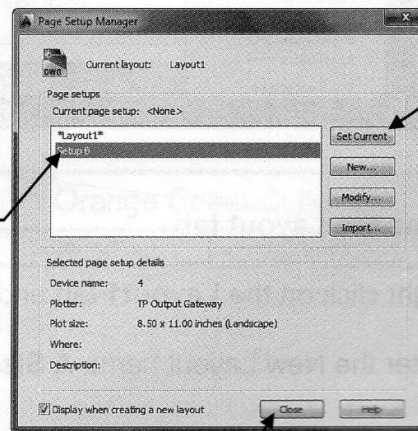


J. Select **OK** button.

K. Select **Setup B**.

L. Select the **Set Current** button.

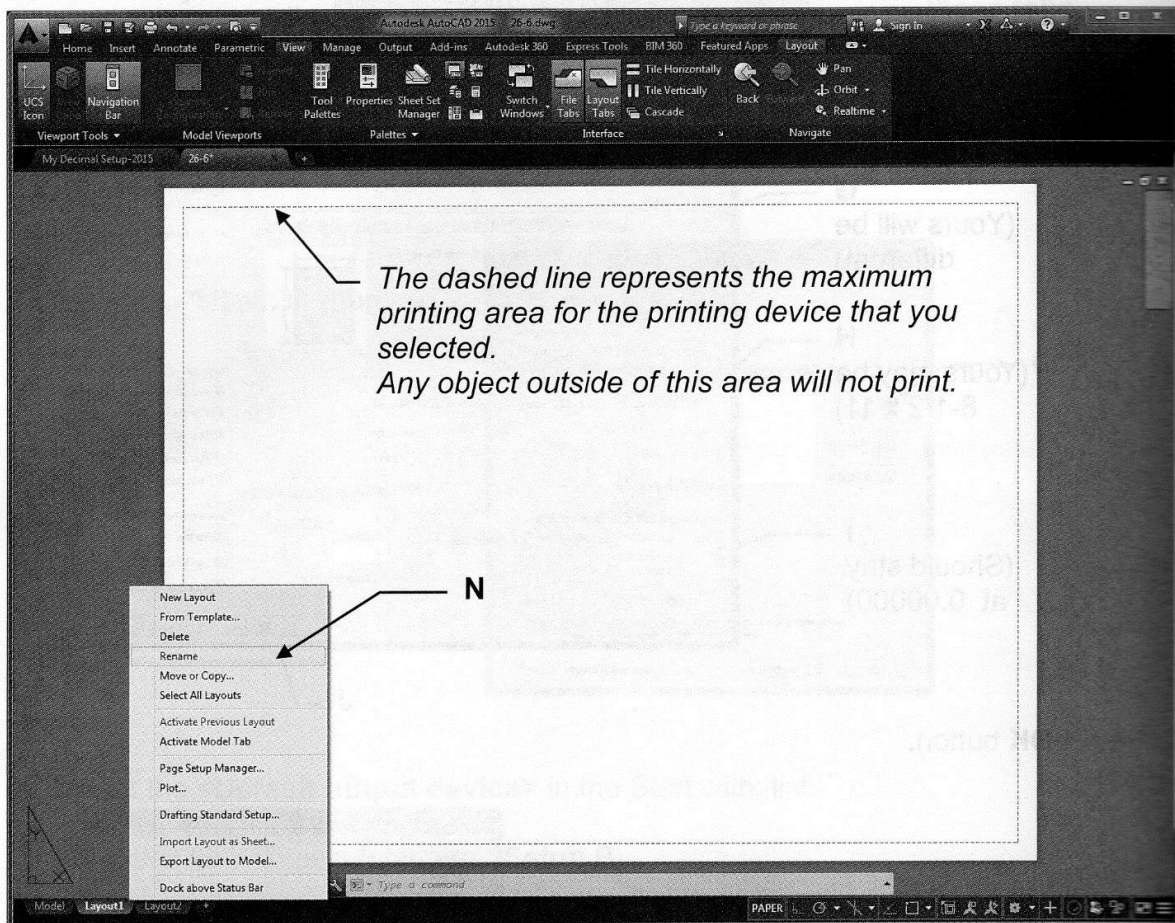
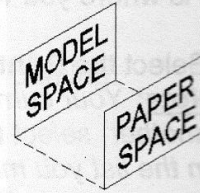
M. Select the **Close** button.



Continued on the next page...

EXERCISE 27B....continued

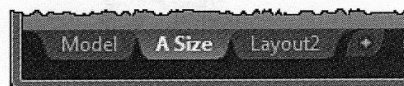
You should now have a sheet of paper displayed on the screen. This sheet is the size you specified in the "Page Setup". This sheet is in front of Model Space.



Rename the Layout tab

N. Right click on the **Layout1** tab and select **Rename** from the list.

O. Enter the New Layout name **A Size**



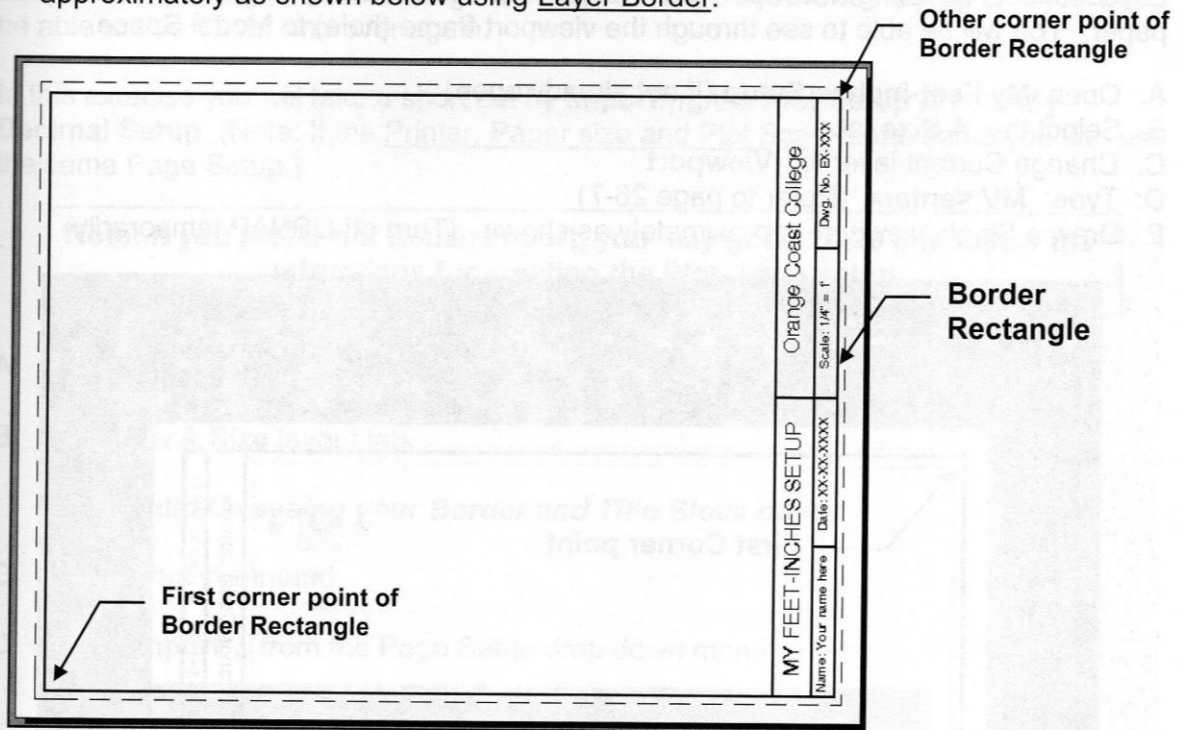
P. **Very important:** Save as **My Feet-Inches Setup** again.

Q. Continue on to **Exercise 27C**.....you are not done yet.

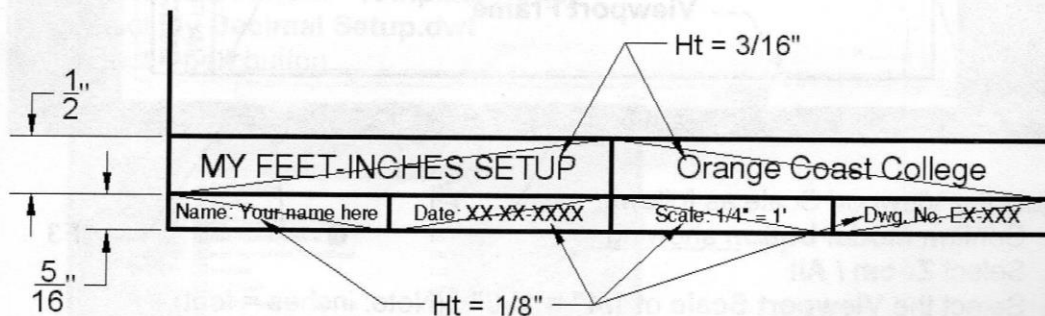
EXERCISE 27C

CREATE A BORDER AND TITLE BLOCK

- A. Draw the Border rectangle as large as you can within the dashed lines approximately as shown below using Layer Border.



- B. Draw the Title Block as shown using:
1. Layers Border and Text.
 2. **Single Line Text** ; Justify **Middle** in each rectangular area.
(Hint: Draw diagonal lines to find the middle of each area, as shown)
 3. Text Style= Text-Classic Text height varies.



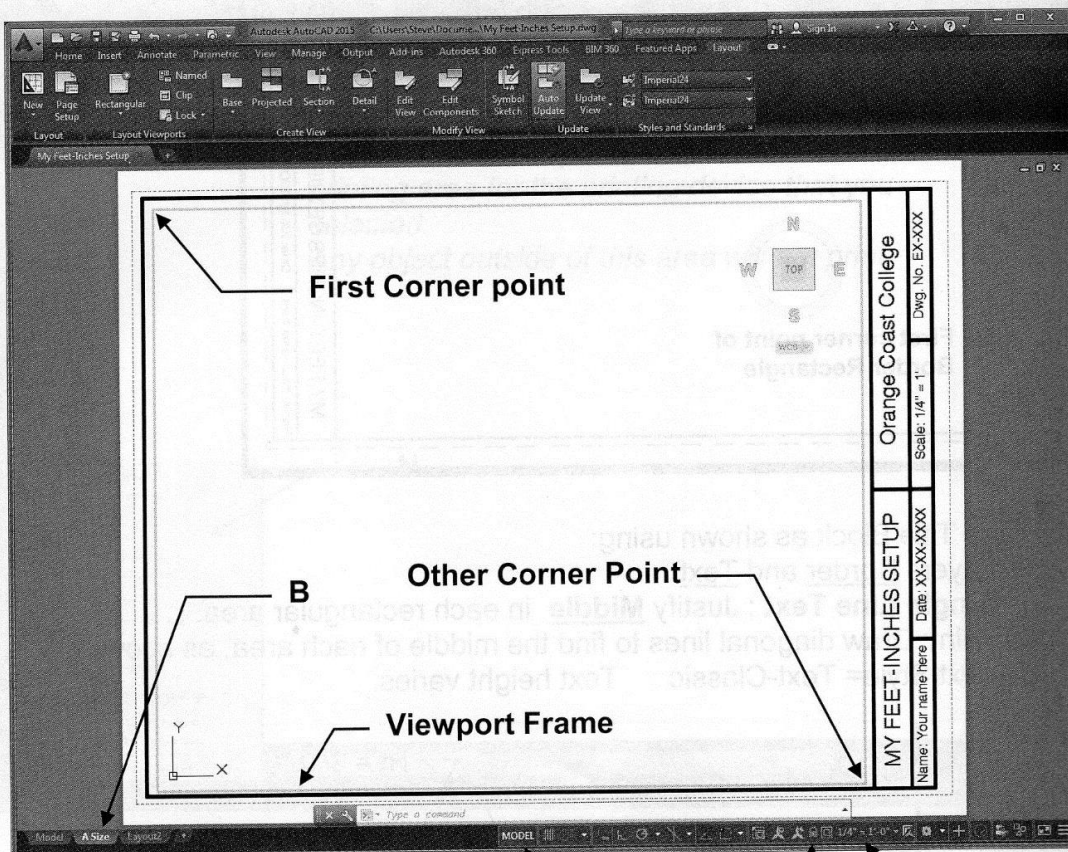
- C. **Very important:** Save as **My Feet-Inches Setup** again.
- D. Continue on to **Exercise 27D**.....you are not done yet.

EXERCISE 27D

CREATE A VIEWPORT

The following instructions will guide you through creating a VIEWPORT in the Border Layout sheet. Creating a viewport has the same effect as cutting a hole in the sheet of paper. You will be able to see through the viewport frame (hole) to Model Space.

- Open **My Feet-Inches Setup** (If not already open)
- Select the **A Size** tab.
- Change Current layer to: **Viewport**
- Type: **MV <enter>** (Refer to page 26-7)
- Draw a Single viewport approximately as shown. (Turn off OSNAP temporarily)



- Adjust the Viewport Scale as follows:
 - Confirm **Model** button showing.
 - Select **Zoom / All**
 - Select the **Viewport Scale** of $1/4" = 1'-0"$ (Note: inches = feet)
- Lock** the Viewport (Refer to page 27-3)
- Very important....** Save as **My Feet-Inches Setup** again.
- Continue on to **Exercise 27E....**you are not done yet.

EXERCISE 27E

PLOTTING FROM THE LAYOUT

The following instructions will guide you through the final steps for setting up the master template for plotting. These settings will stay with **My Feet-Inches Setup** and you will be able to use it over and over again.

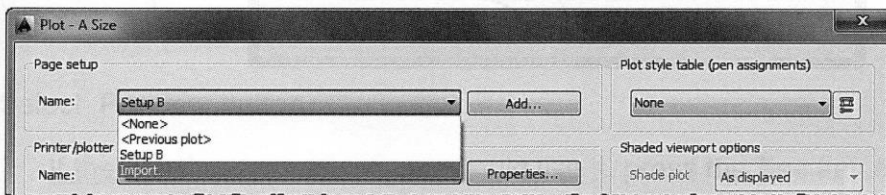
In this exercise you will take a short cut by **importing** the **Plot Setup A** from **My Decimal Setup**. (Note: If the Printer, Paper size and Plot Scale is the same you can use the same Page Setup.)

Note: If you prefer not to use Import, you may go to 26-33 and follow the instructions for creating the Plot- page setup.

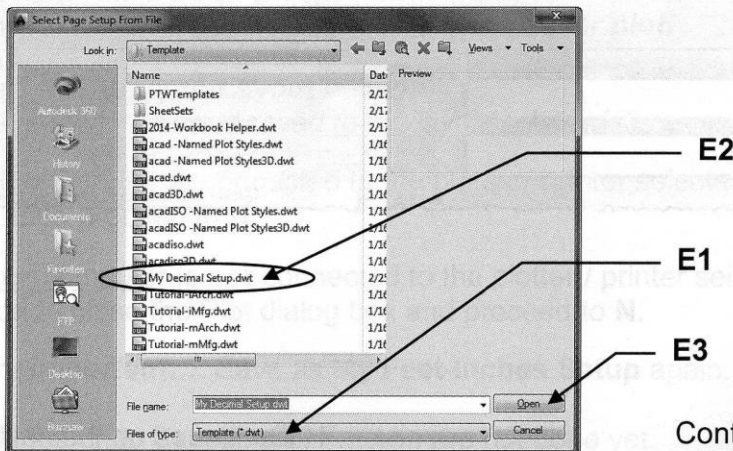
- A. Open **My Feet-Inches Setup** (If not already open)
- B. Select the **A Size** layout tab.

You should be seeing your Border and Title Block now.

- C. Select **Plot** command.
- D. Select **Import...** from the Page Setup drop down menu



- E. Find **My Decimal Setup.dwt** as follows:
 - E1. Select Files of type: **Template [.dwt]**
 - E2. Select **My Decimal Setup.dwt**
 - E3. Select **Open** button.



Continued on the next page...