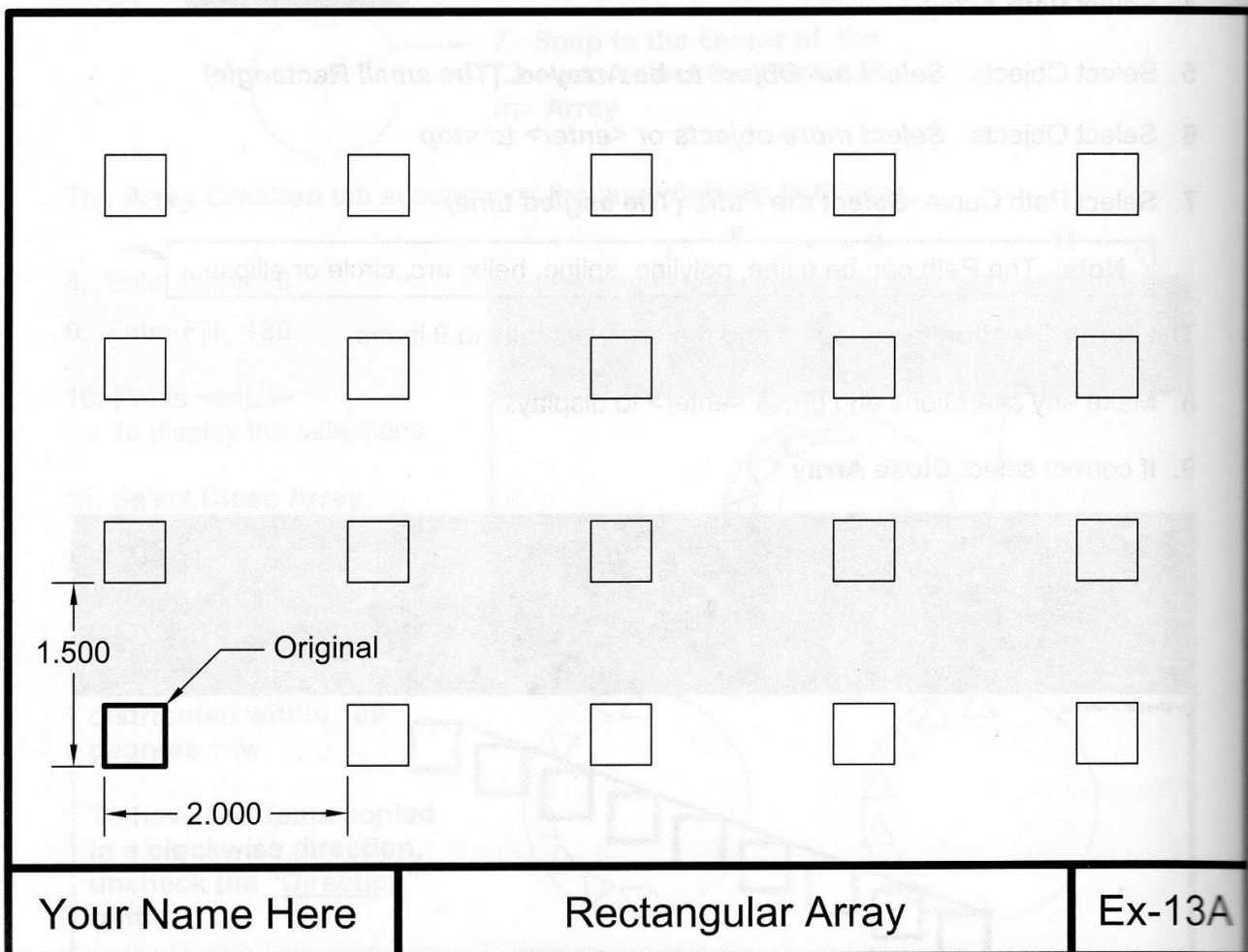


# EXERCISE 13A

## INSTRUCTIONS:

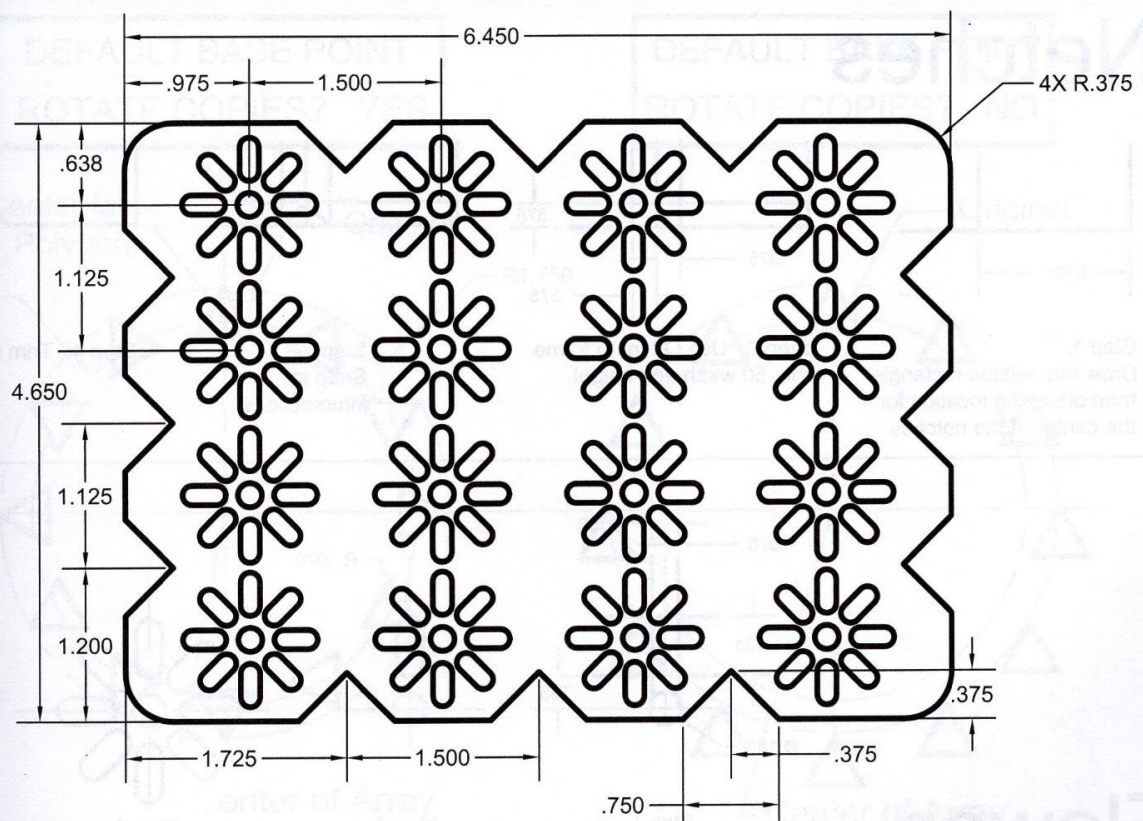
1. Start a **New** file using **Border A-2015.dwt**
2. Draw the original .500 square on Layer Object.
3. Array the original square as shown.
4. Edit the Title and Ex-XX by double clicking on the text. Do not erase and replace.
5. Do not dimension
6. Save as **EX13A**
7. Plot using Page Setup **Class Model A**



# EXERCISE 13B

## INSTRUCTIONS:

1. Start a **New** file using **Border A-2015.dwt**
2. Draw the objects shown below using the most efficient methods.
3. **Refer to the next page for more dimensions and helpful hints.**
4. Use Layers = Object line.
5. Edit the Title and Ex-XX by double clicking on the text. Do not erase and replace.
6. Do not dimension
7. Save as **EX13B**
8. Plot using Page Setup **Class Model A**



Refer to the next page for helpful hints and more dimensions.

Your Name Here

Place mat

Ex-13B

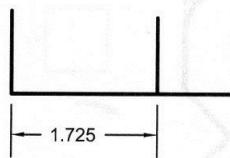
# EXERCISE 13B

## Helper

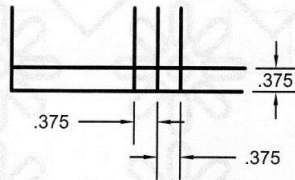
INSTRUCTIONS:

1. Start a New file using Borderless (if you wish) and a blank drawing.
2. Draw the object shown below using the most efficient method.
3. Refer to the next page for more dimensions and instructions.
4. Check your Object Properties and use the Object Properties palette to change the color and layer of the object.
5. Edit the Title and Ex-XX by double clicking on the text. Do not use the Text command.
6. Do not dimension.
7. Save as EX13B.
8. Plot using Page Setup Class Model A.

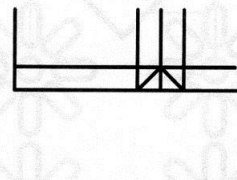
### Notches



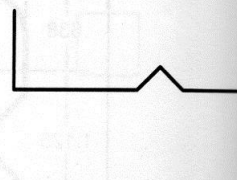
Step 1.  
Draw the outside rectangle  
then offset the location for  
the center of the notches.



Step 2. Use Offset to frame  
the .50 width and height.

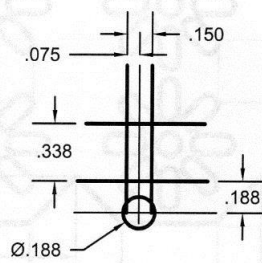


Step 3.  
Snap to  
intersections

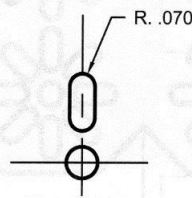


Step 4. Trim and erase.

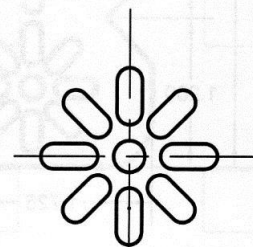
### Flower



Step 1.  
Offset



Step 2.  
Fillet



Step 3.  
Array

Your Name Here

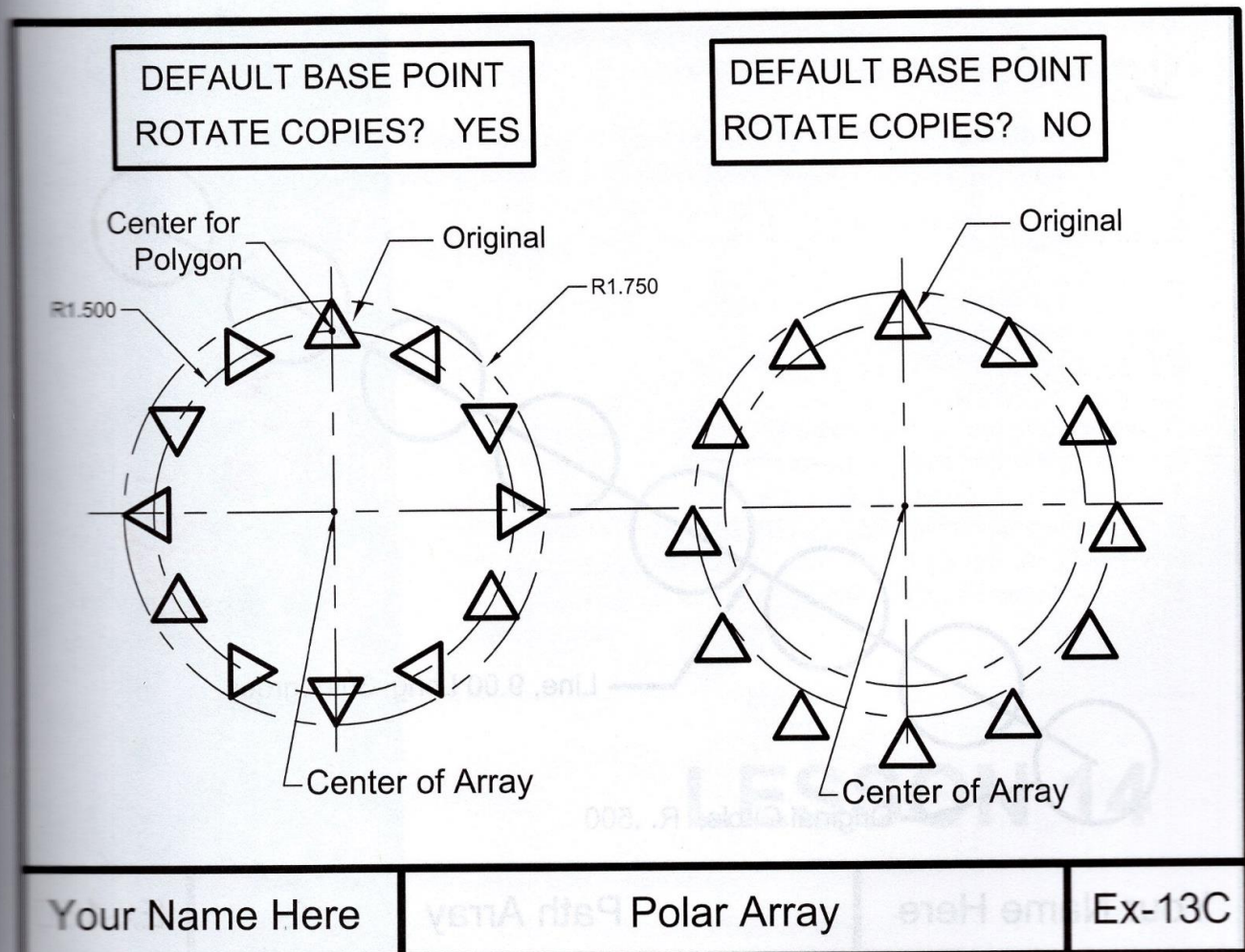
13B HELPER

Ex-13B

# EXERCISE 13C

## INSTRUCTIONS:

1. Start a **New** file using **Border A-2015.dwt**
2. Draw the centerlines and circles first.
3. Draw one Polygon at the 12:00 location.
4. Array the original Polygon as shown.
5. Edit the Title and Ex-XX by double clicking on the text. Do not erase and replace.
6. Do not dimension
7. Save as **EX13C**
8. Plot using Page Setup **Class Model A**



# EXERCISE 13D

## INSTRUCTIONS:

1. Start a **New** file using **Border A-2015.dwt**
2. Draw Line first. (9.00 Long, 30 degree)
3. Draw one Circle (Radius .50) at lower left end.
4. Array 8 Circles along the Path (Line) evenly divided.
5. Edit the Title and Ex-XX by double clicking on the text. Do not erase and replace.
6. Do not dimension
7. Save as **EX13D**
8. Plot using Page Setup **Class Model A**

