



Making A Flared Top Hat

Finally! A full size top hat with style.

You Will Need

- **Pattern:** When you print the pattern at the end of this PDF, measure against the print guides to know the scale is correct.
- **Very Sharp Knife:** If it is not really sharp you will have a terrible time when you are cutting the foam. I use a surgical scalpel.
- **Ballpoint Pen**
- **Scissors**
- **Hot Glue Gun:** In most of my other projects I would recommend contact cement for the main construction, and to be honest I think contact cement is still the strongest, cleanest long term adhesive. However it is also very toxic and not as readily available, so for this project, I will demonstrate how I use hot glue.
- **Camping or exercise mat:** Smooth on at least one side, The one I used is 8mm (7/16 Inch) thick. If you use a significantly different thickness you will have to make some slight adjustments to the pattern to compensate.
- **Hair Dryer:** Use this to heat the foam so you can form it. CAUTION: since we are using hot glue, it is very important not to get the seams too hot or the glue will remelt.
- **Cutting Surface:** Somewhere to cut where you won't be destroying anything.
- **Paint:** I didn't show me painting the hat in the video, I figure you can learn all you need to know by watching my other videos here: <https://youtu.be/zoN4K9wLi6M> and here: <https://youtu.be/3WclYUYe6k4> The best paint to use is artists acrylic paint, but I have also used ordinary house paint as well. I prefer the look of a gloss or semi gloss instead of flat.
- If you haven't already, please watch the instructional video at <http://youtu.be/RBD3s2oIX7A>

*** I have links to a lot of the different supplies I use on my projects [here](#)***

Step 1: Print the Pattern

You will need to print the pattern page of this PDF. Make sure the scale is set to **actual size** in the printer dialogue box of what ever software you are using to print. You can check if it has printed properly by measuring the print guides.

Step 2: Measure your head

Use a measuring tape to measure your head in centimetres where the hat will sit. Find the corresponding size pattern pieces. If your head is larger than the size indicated, go to the next size up.

Step 3: Cut out your pattern

Find the corresponding pattern sizes on the top and band patterns, and find the three band pieces that match your size. Cut the pattern out of the paper, cutting as close to the line as you can without removing the line.

Place the pieces on the foam and trace around them with the ballpoint pen, holding them firmly so that they don't move while being traced. You will need to trace piece A twice, and pieces B and C four times each. I trace B and C twice with the pattern pieces right side up and mark them B₁ and C₁ then I flip the pattern pieces over and trace B and C another two times each and label these as B₂ and C₂.

Make sure to mark the centre lines on the brim and the top piece.

Step 4: Cut some foam

Take your sharp knife and carefully cut out the pieces, **cutting right down the centre of the pen line**.

On the top piece, cut with the bottom of your knife blade angled in towards the centre of the foam piece. This will help the top piece fit nicely into the flared band.

Step 5: The Band

Set up your pieces as shown in the video, so that you know how the pieces will go together. Using your glue gun, apply glue to the first 5 cm of piece A and then hold piece A and piece B₁ together until the glue cools. Keep repeating the gluing process a little at a time until all the pieces are glued together. It takes a bit of practice to get the right amount of glue so that it sticks together but without the glue coming bulging out the gap.

Step 6: Add the brim

Line up the centre line on the brim with the centre of piece A. Glue piece A to the brim at the front and then again at the back. Then find the centre of one side and tack that in place with some glue. Now glue the remaining sections of the brim.

You may find at first that it looks like the brim is not going to fit properly on the band, but usually if you do it this way you can even out any extra space and once you get the foam glued in, it either compresses or expands to fit nicely. That is the great thing about using a material as malleable as foam, it allows for variance in cutting and still ends up working out O.K.

Step 7: Glue the top piece

This is pretty similar to gluing the brim- start at the front centre, then back centre, then the two sides, and then all the rest. Pretty simple really.

Step 8: Form the brim

Grab your hairdryer, set it at the hottest setting, heat up the brim and curve it to your liking. Hold it like that as it cools. Just be careful not to aim the heat near the seams, or your hat will start to fall apart on you.

Step 9: Paint it up

Using artists acrylic paints, give your hat an awesome, funky paint job, add some embellishments, go crazy.

Step 10: Run around the house in your one of a kind top hat!

I would like to sincerely thank you for purchasing this pattern and I would love to see what you create with it. If you would like to email me photos, please send them to:

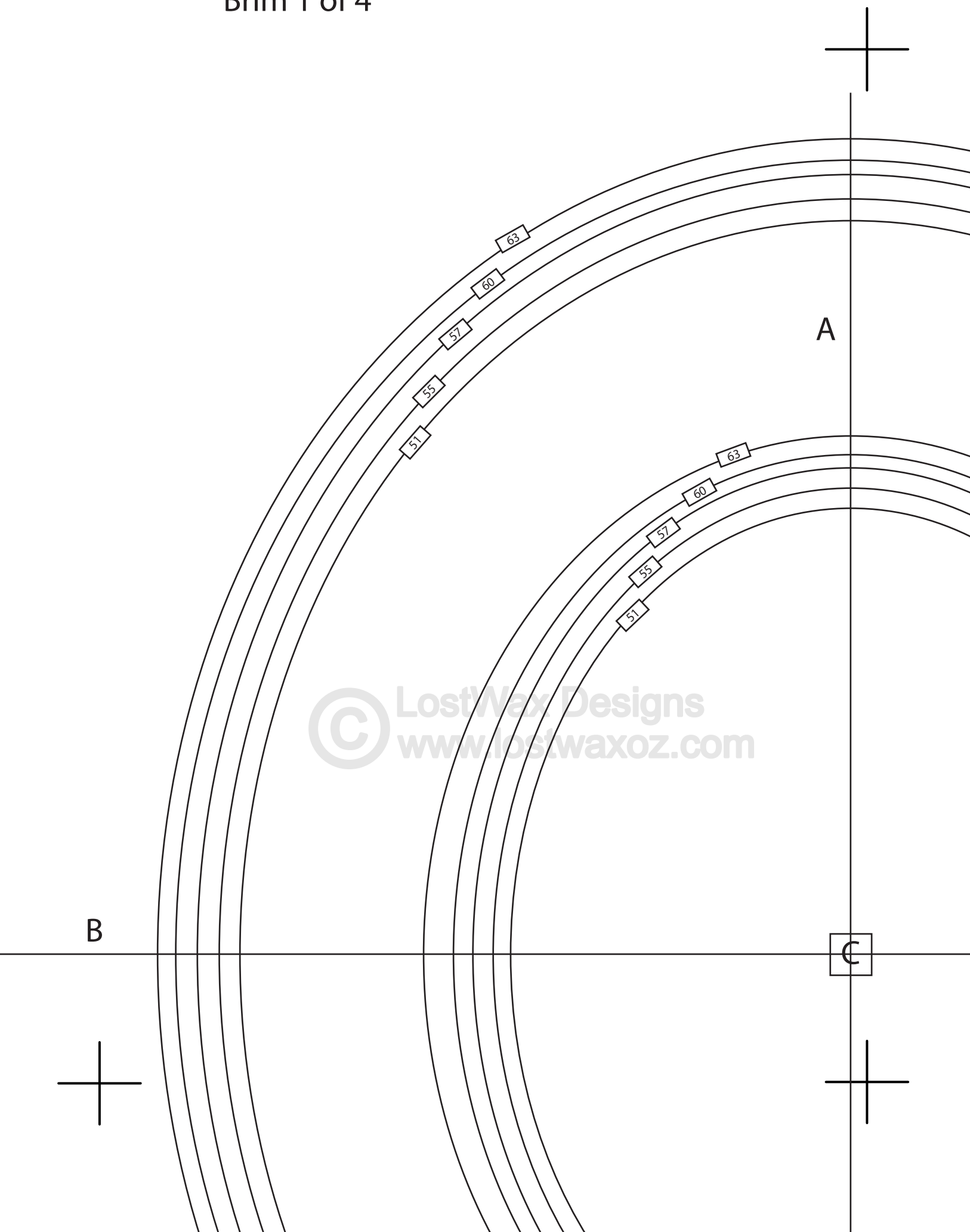
lostwaxoz@gmail.com

Also I am always looking to improve your experience, so if you have any problems or suggestions, I would love to hear them as well!

Thanks again!

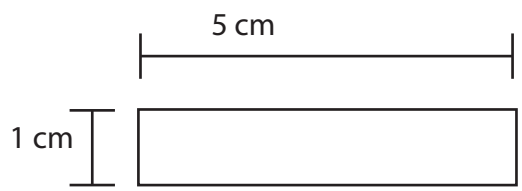
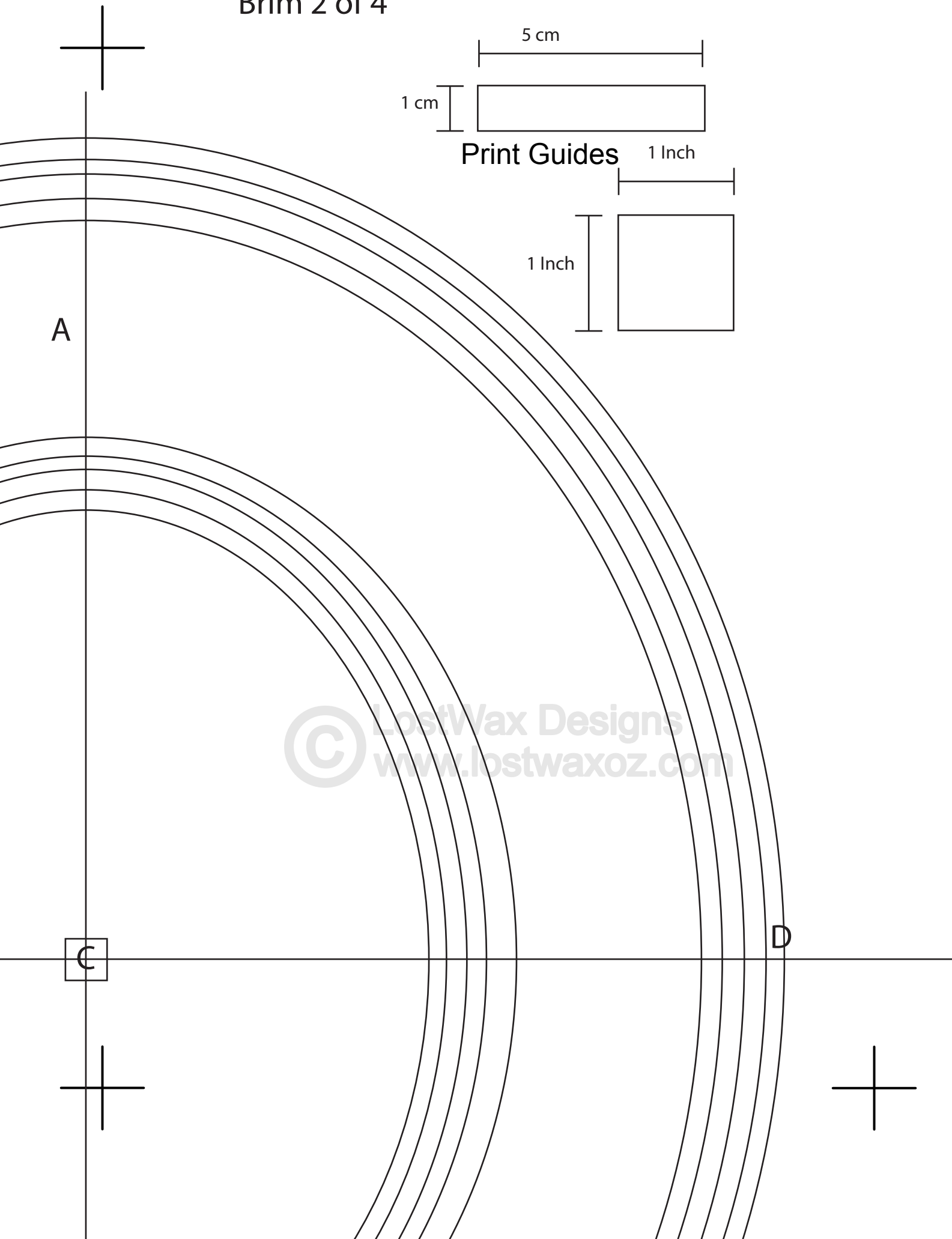
Chris Huebert

Brim 1 of 4

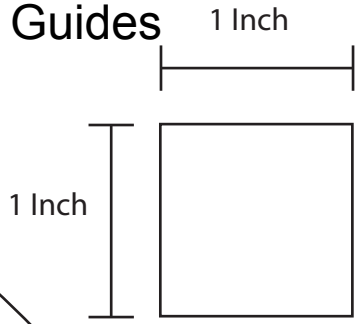


© LostWax Designs
www.lostwaxoz.com

Brim 2 of 4



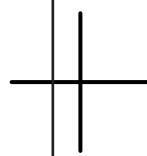
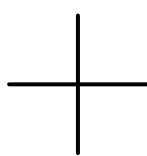
Print Guides



© LostWax Designs
www.lostwaxoz.com

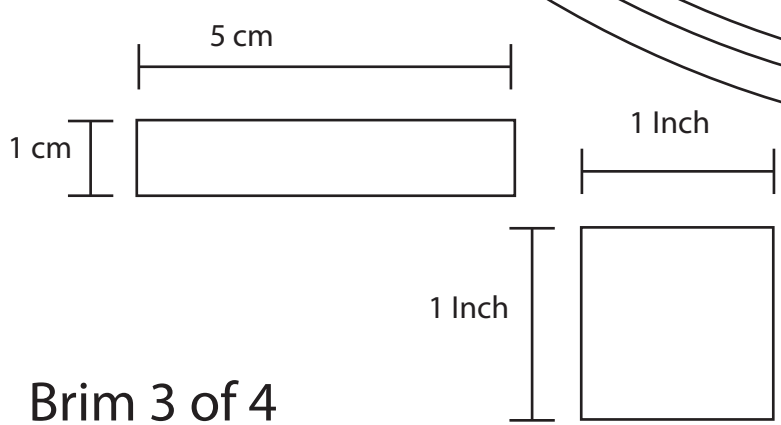
D

C

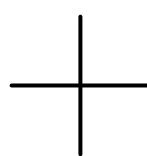


LostWax Designs
www.lostwaxoz.com

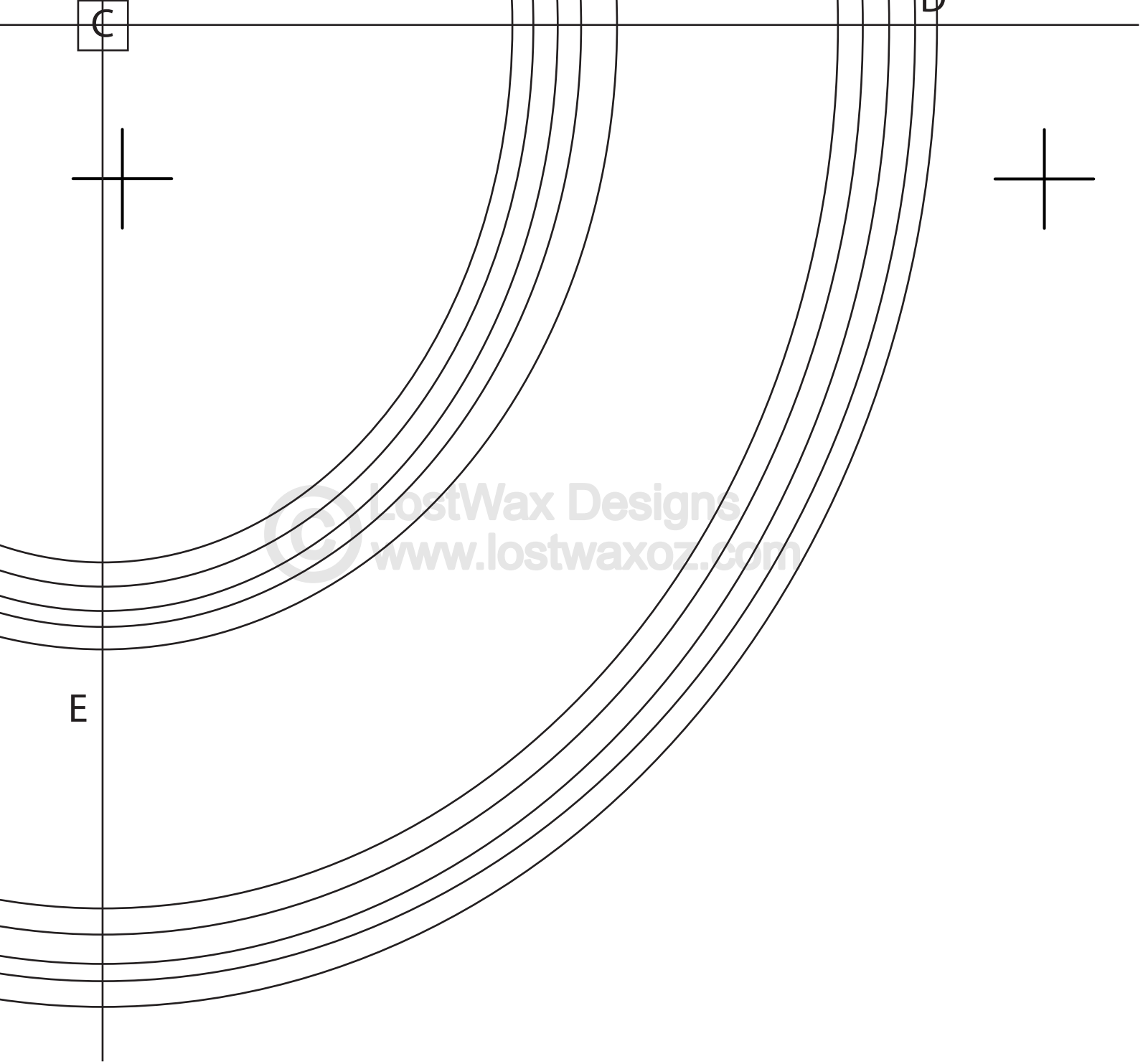
E



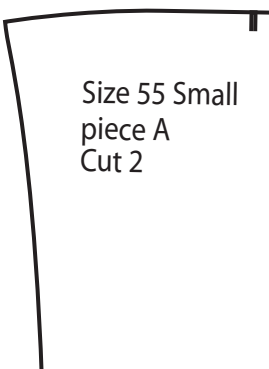
Brim 3 of 4



Top
small

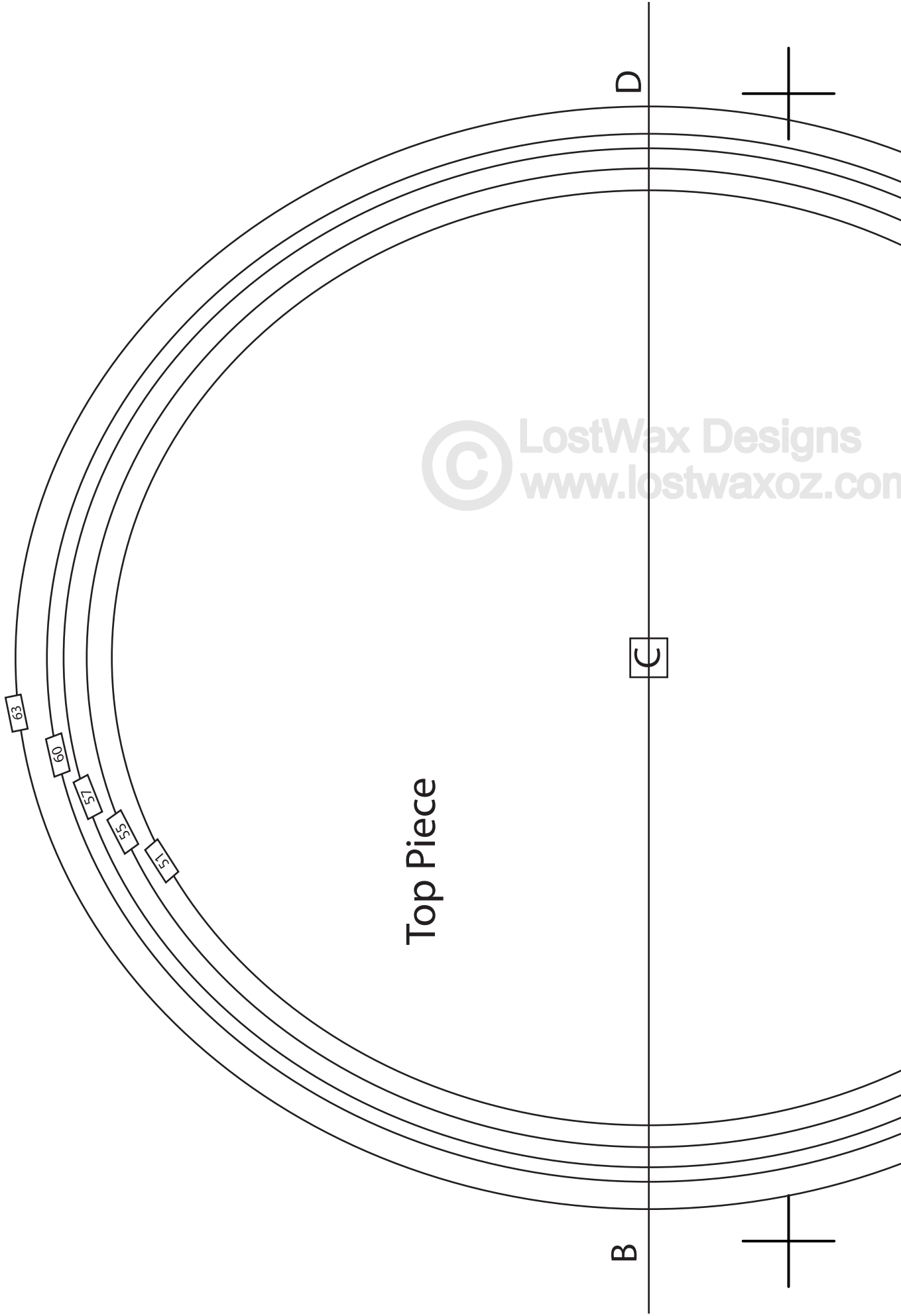


Brim 4 of 4



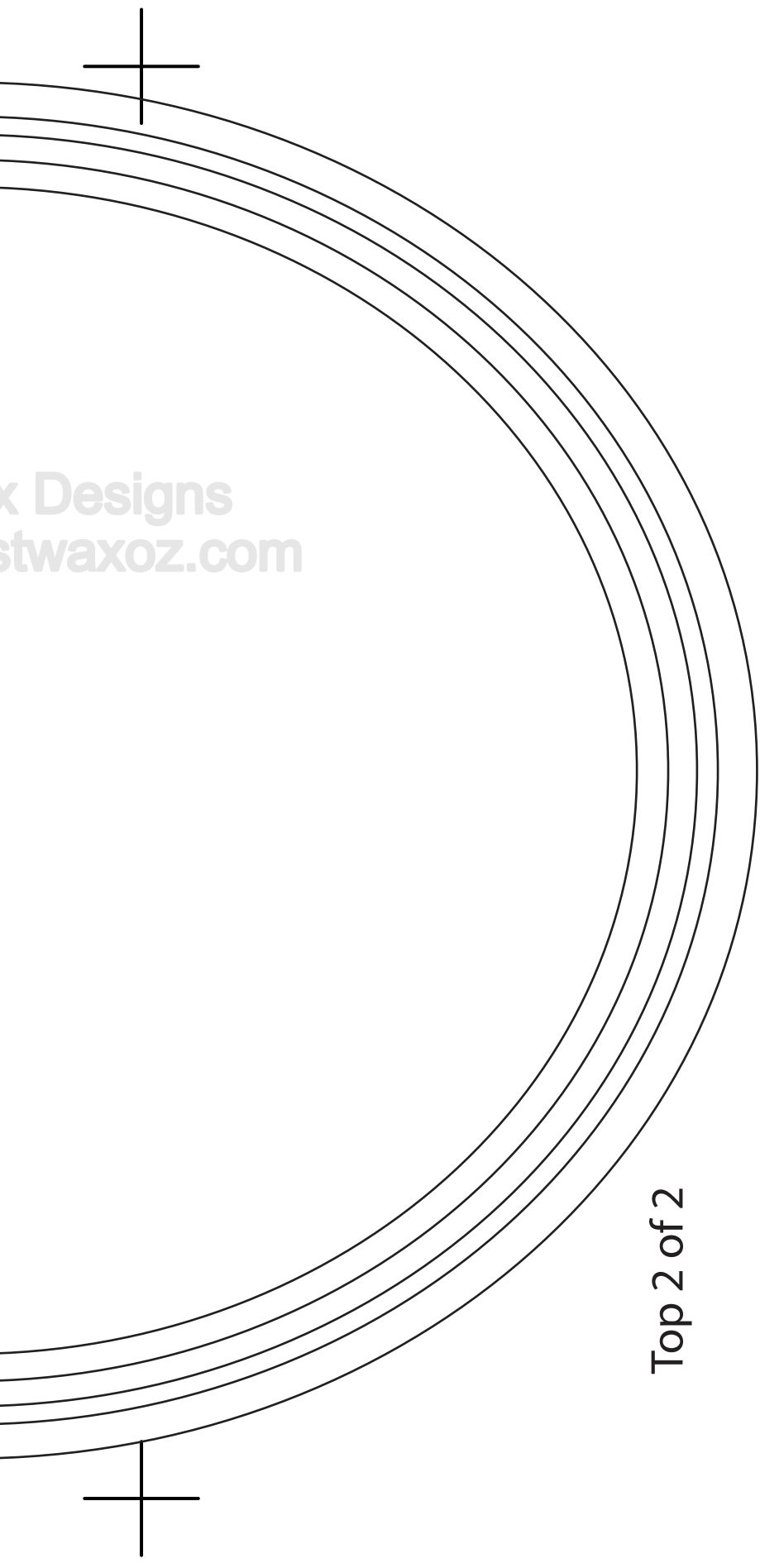
Size 55 Small
piece A
Cut 2

Top 1 of 2

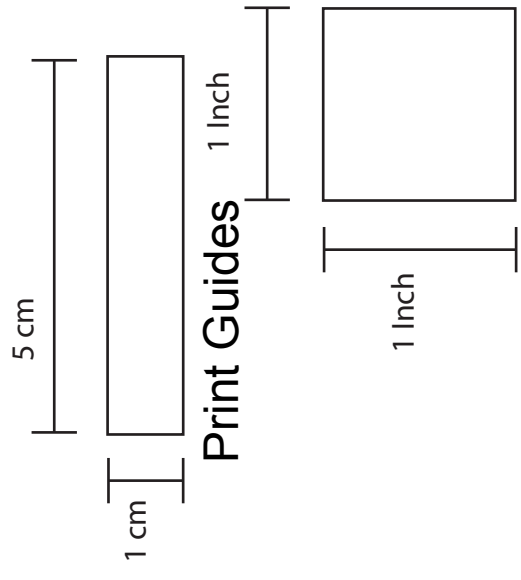


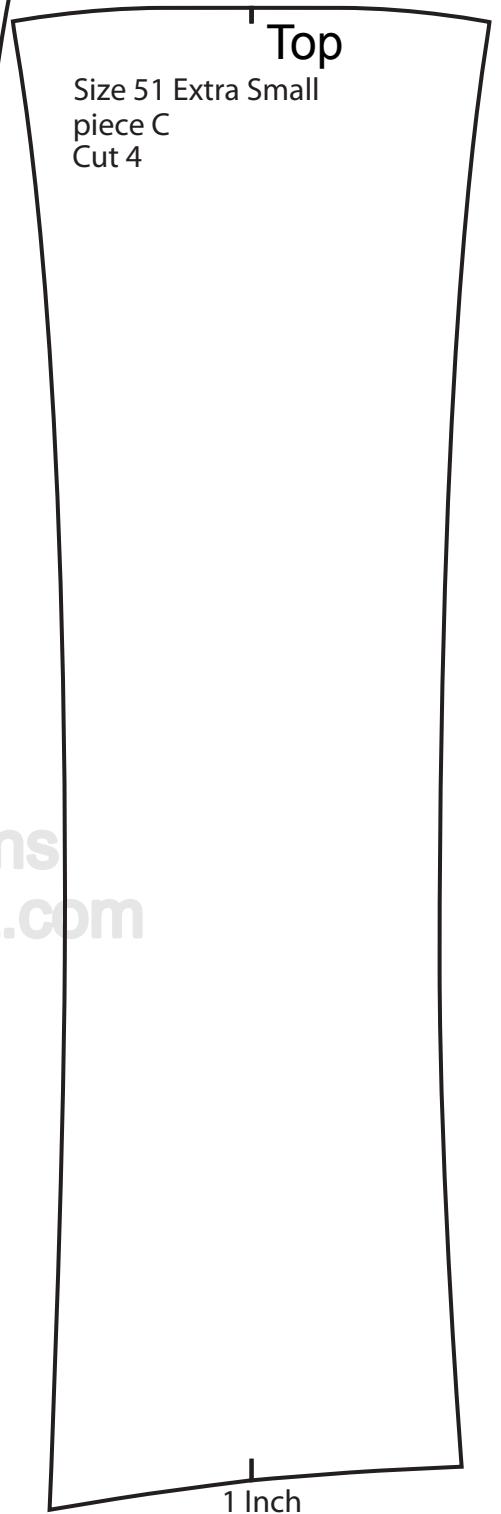
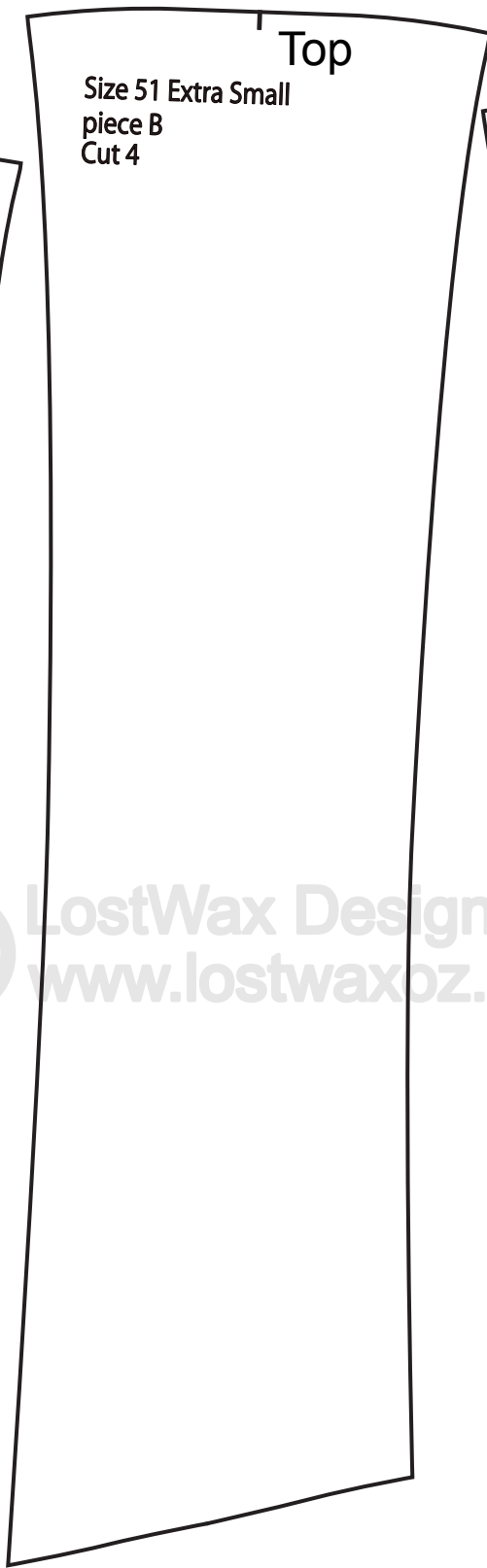
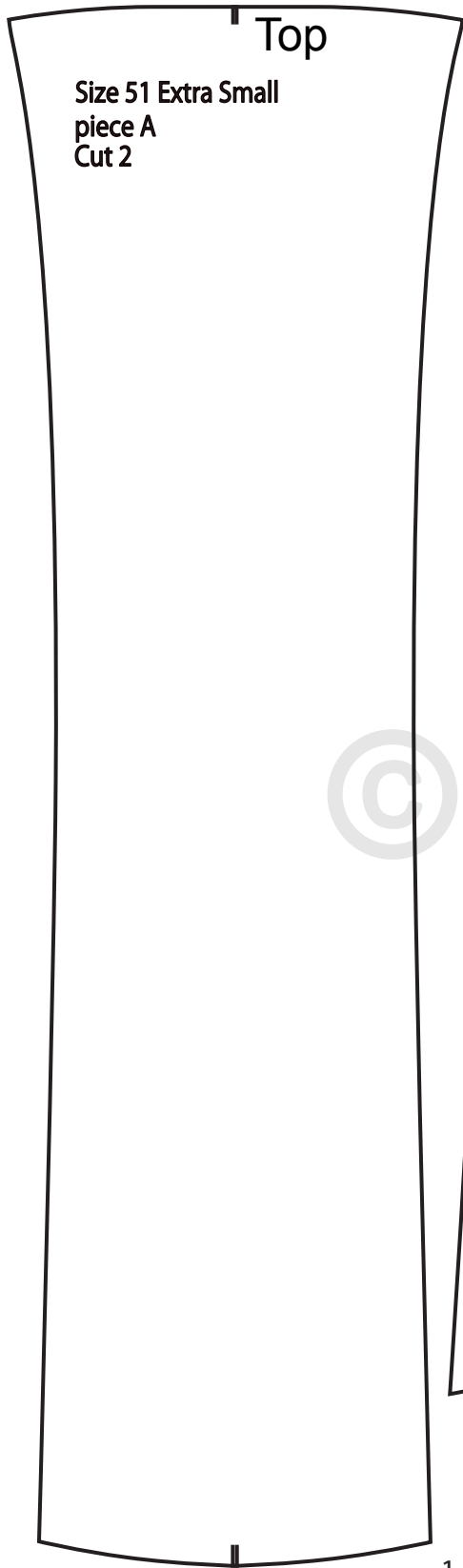
Top Piece

© LostWax Designs
www.lostwaxoz.com

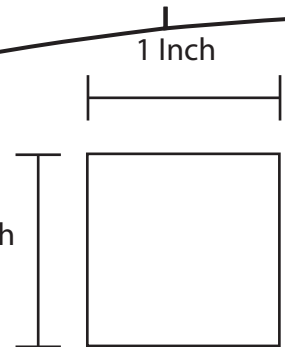
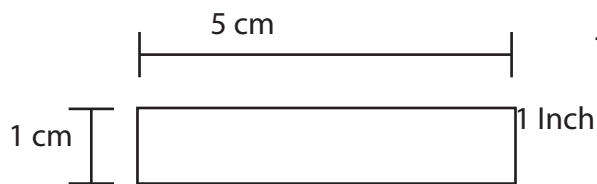


Top 2 of 2

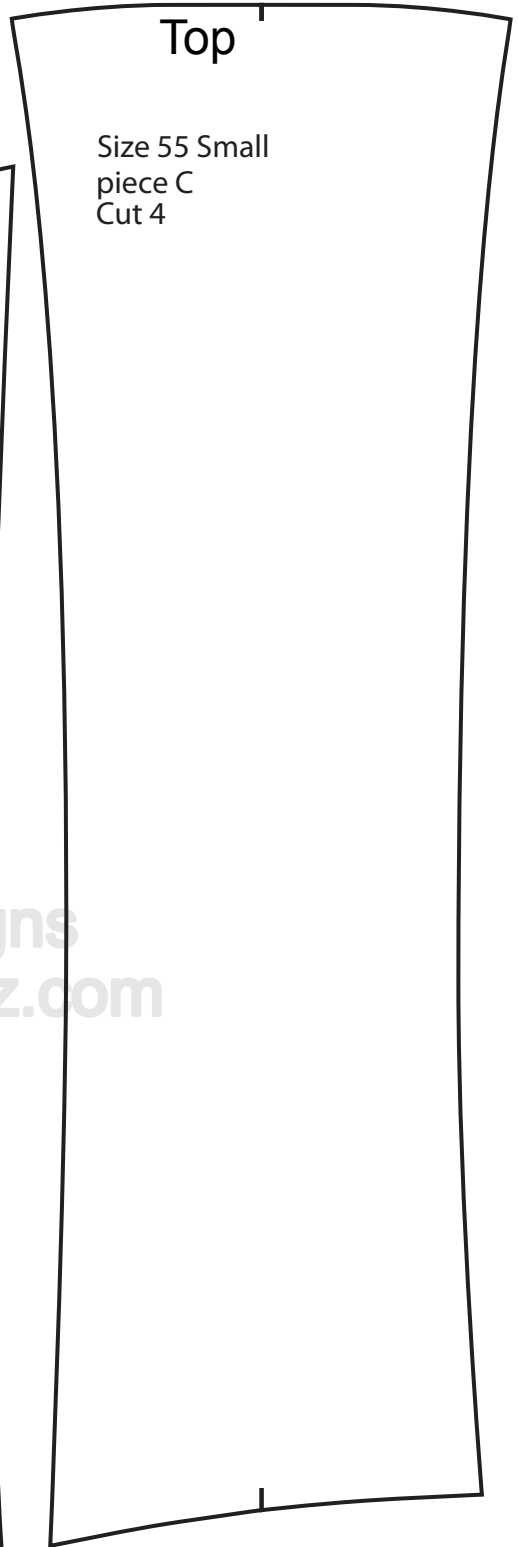
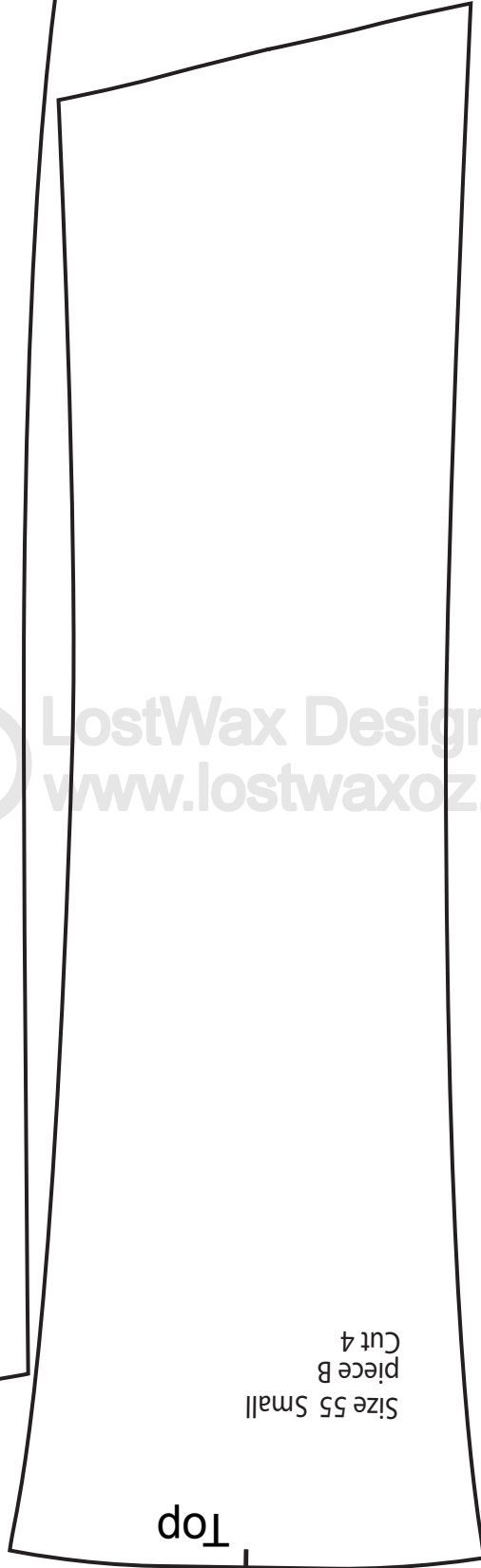
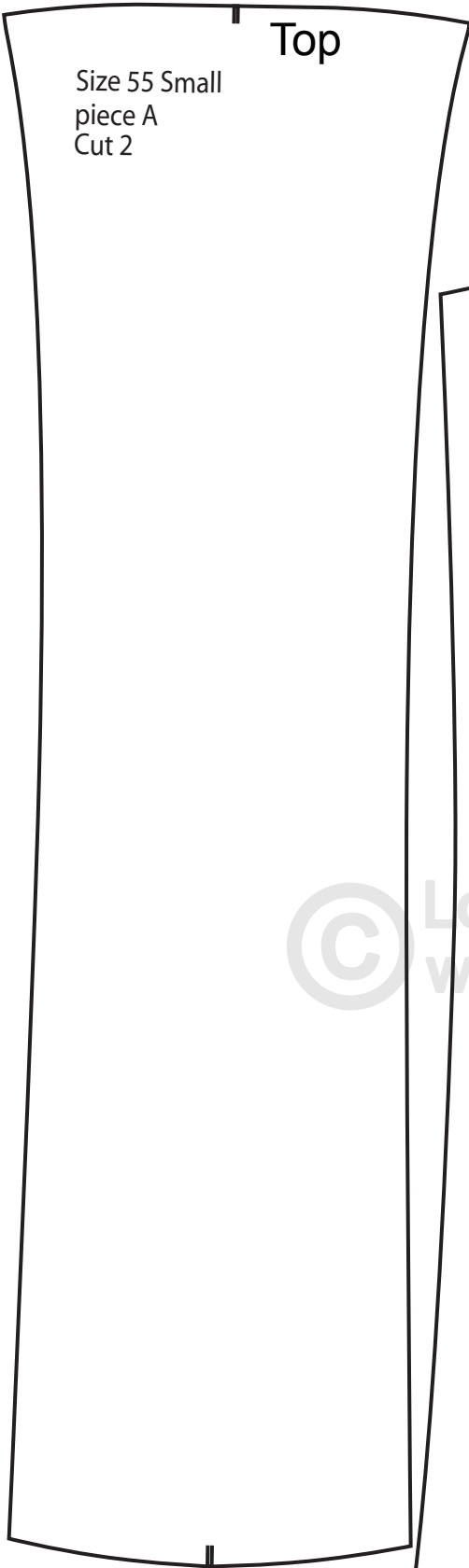




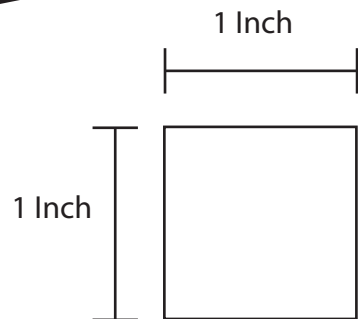
© LostWax Designs
www.lostwaxoz.com



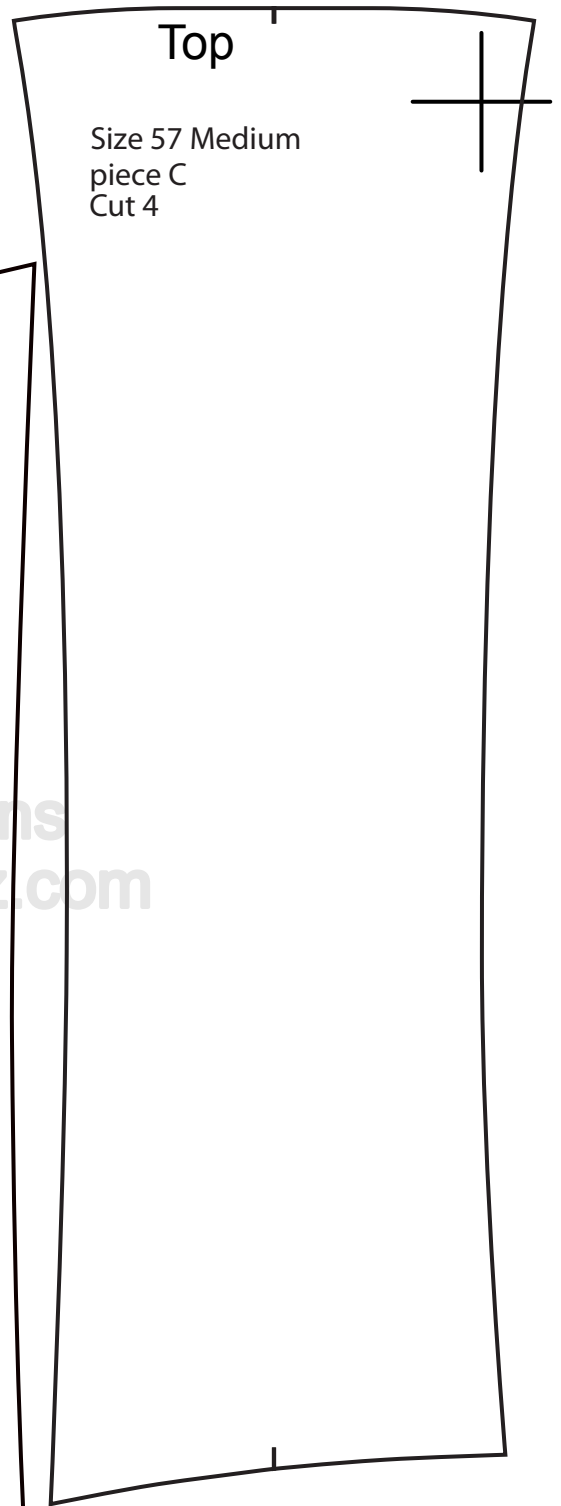
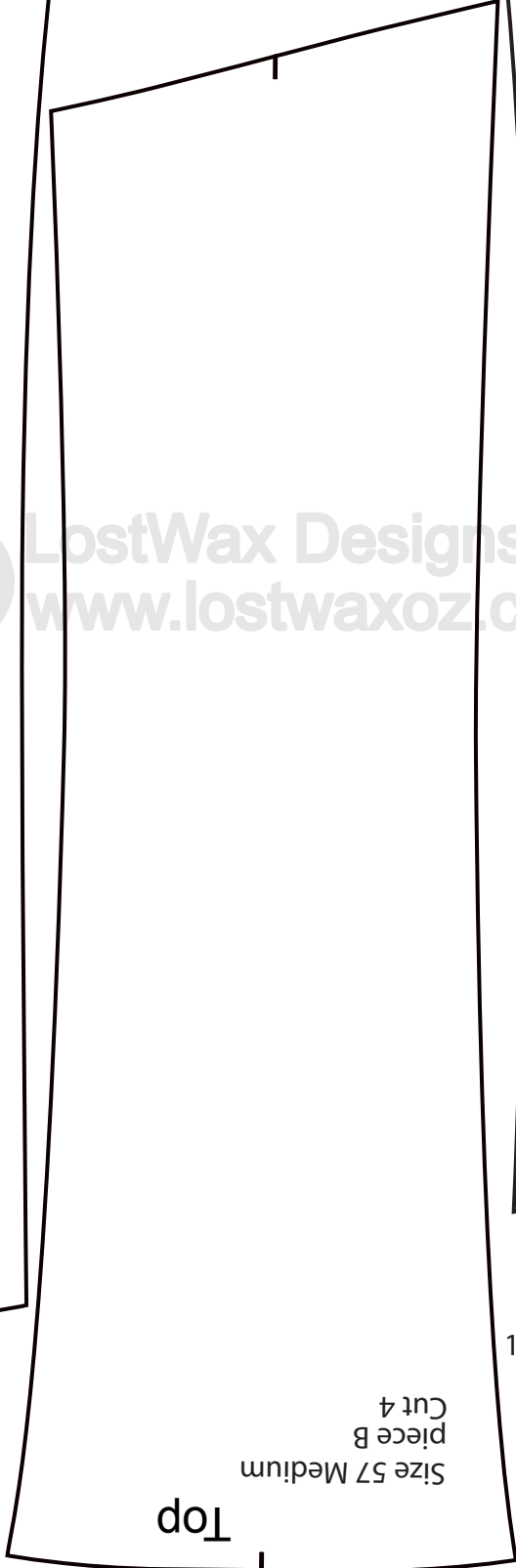
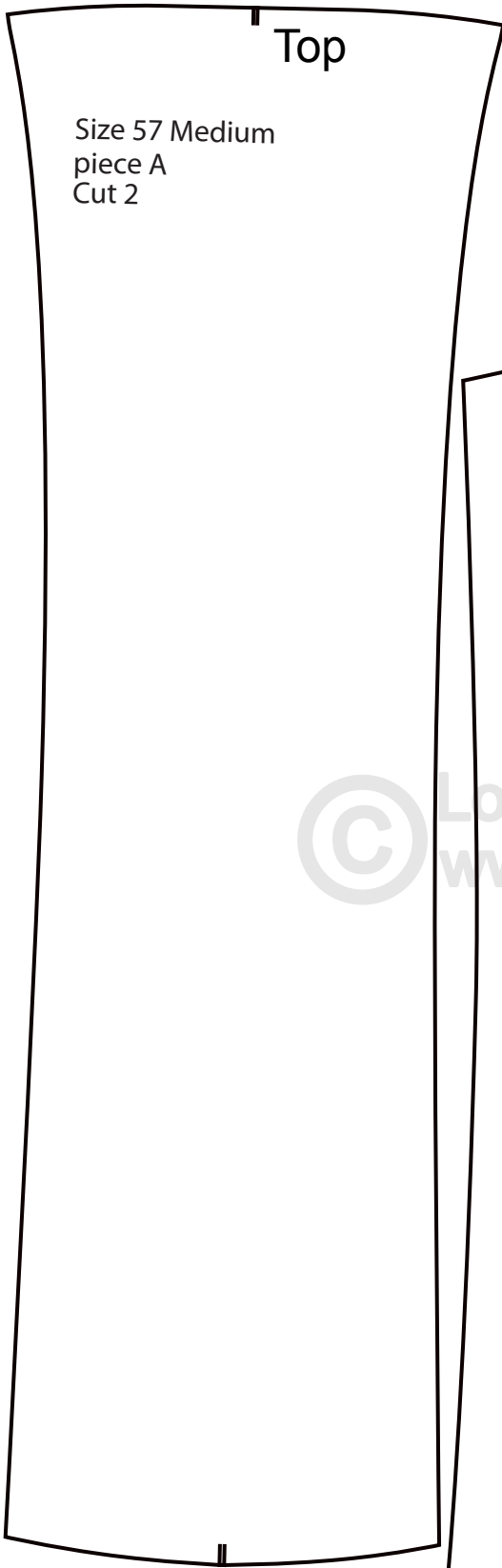
Print Guides



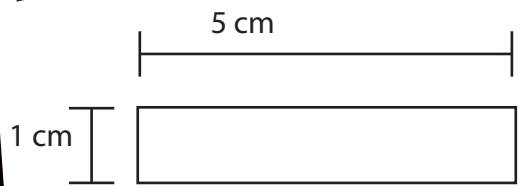
© LostWax Designs
www.lostwaxoz.com



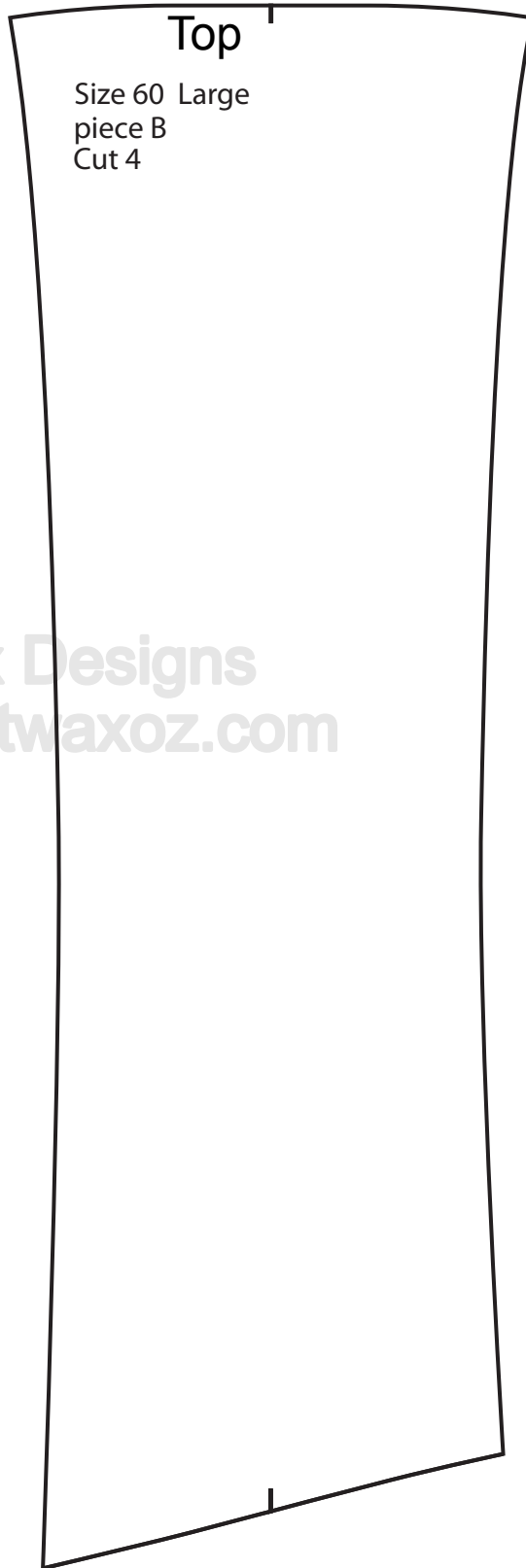
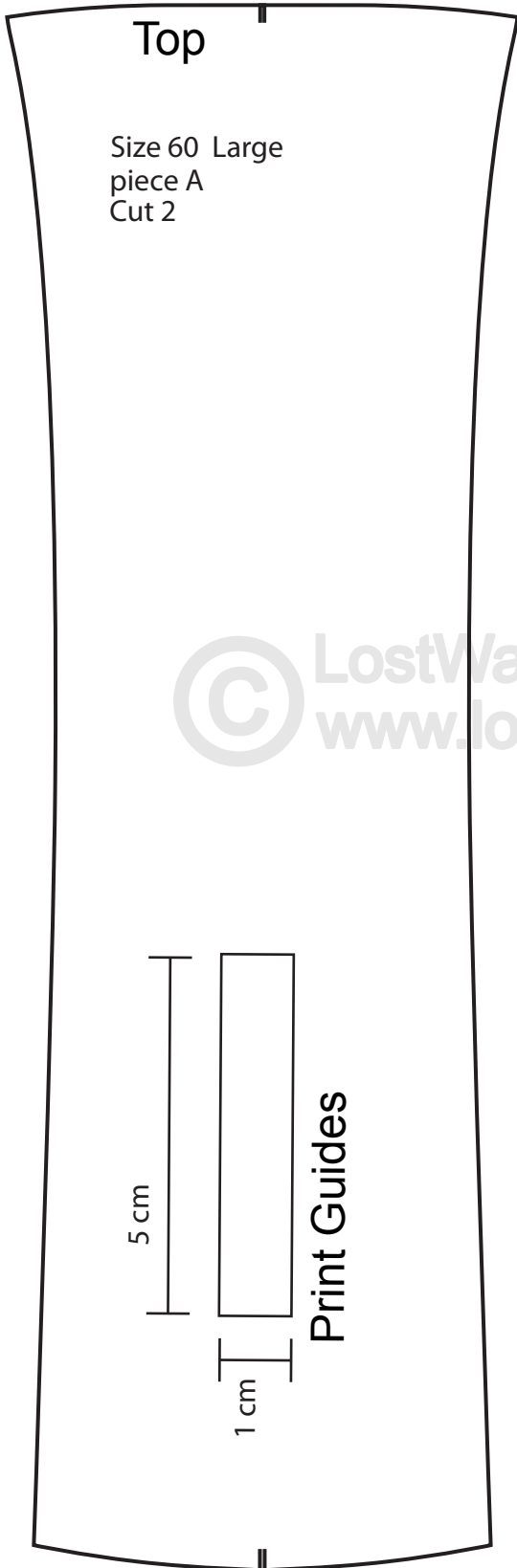
Print Guides

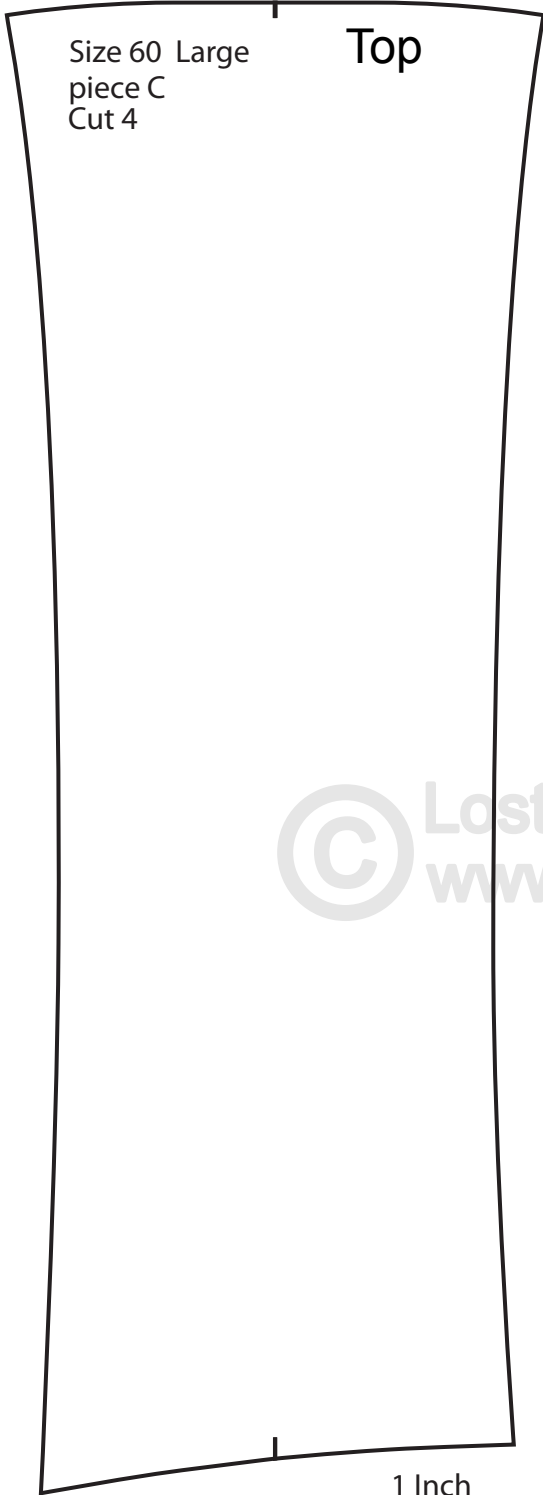


© LostWax Designs
www.lostwaxoz.com



Print Guides

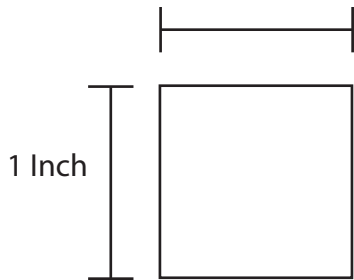




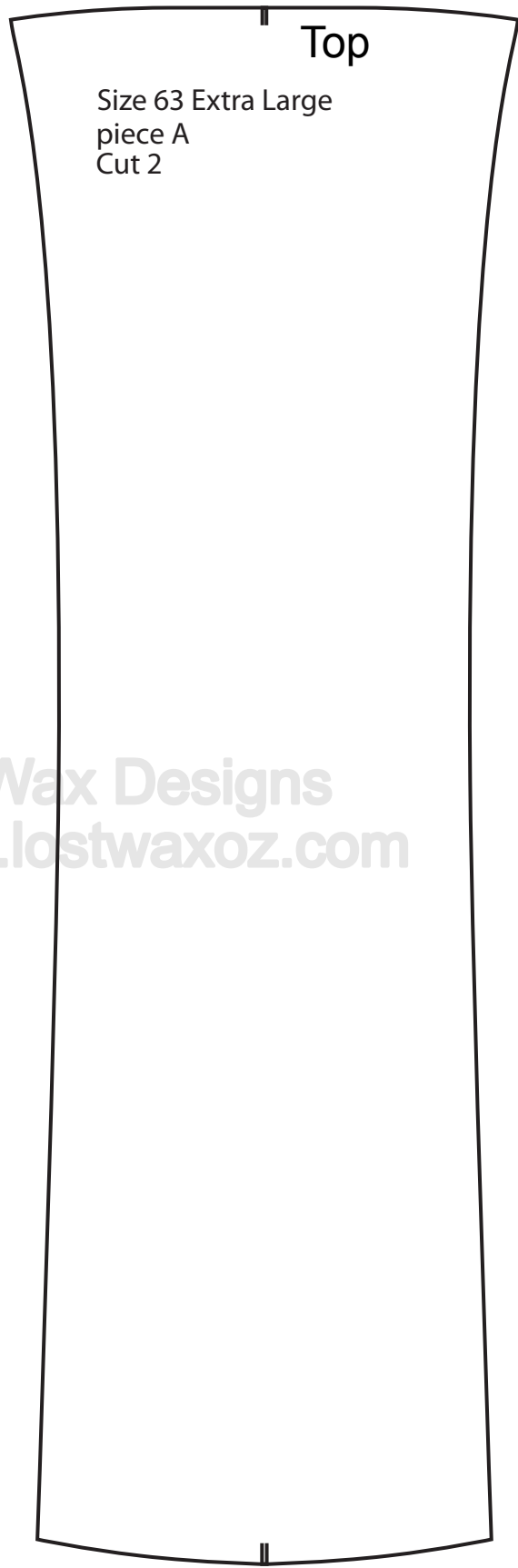
Size 60 Large
piece C
Cut 4

Top

1 Inch



Print Guides

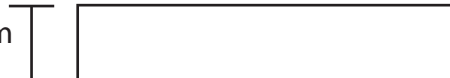


Size 63 Extra Large
piece A
Cut 2

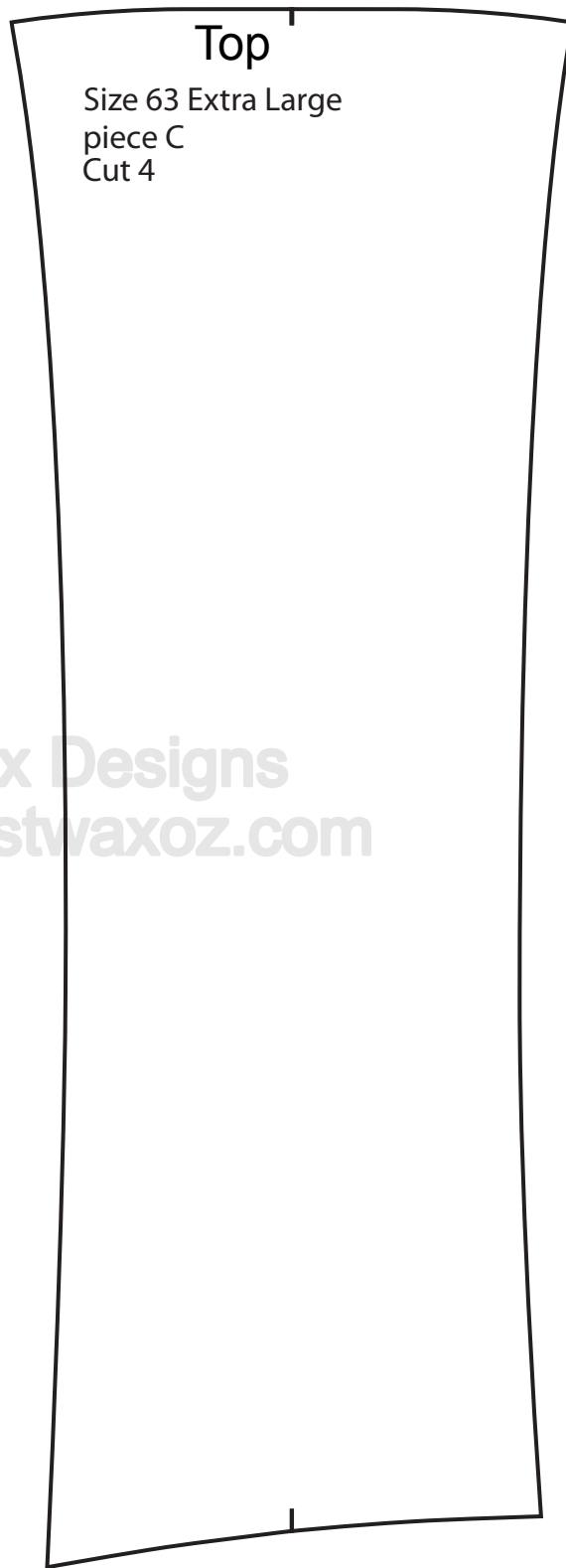
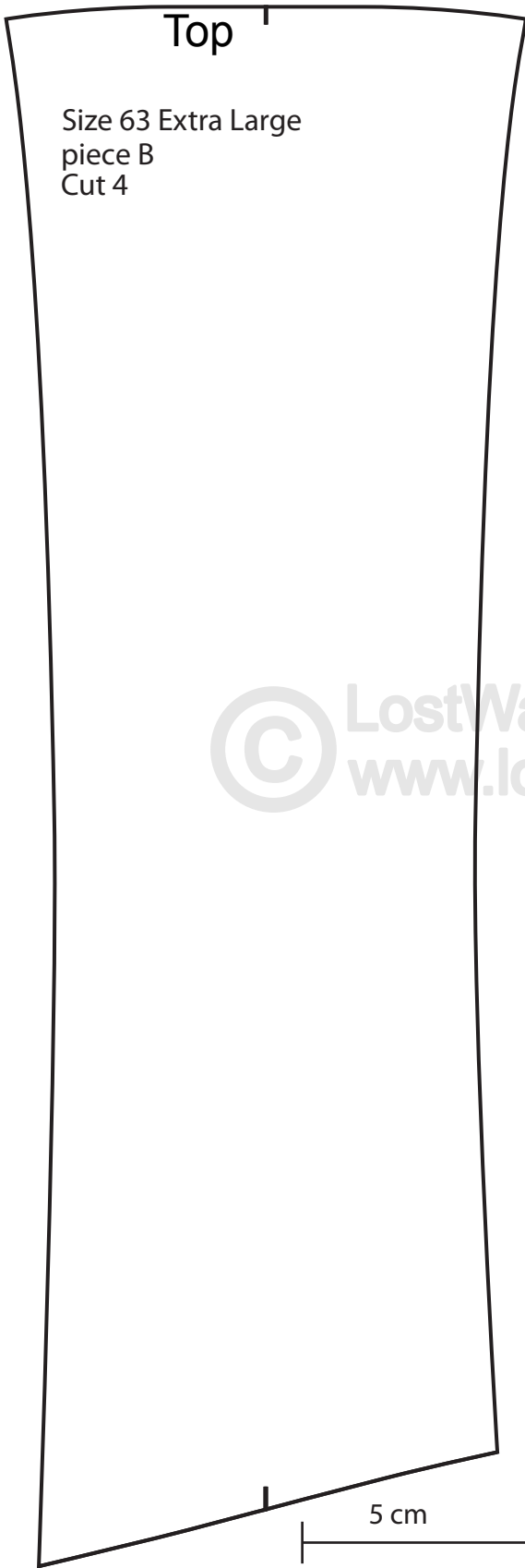
Top

5 cm

1 cm



© LostWax Designs
www.lostwaxoz.com



© LostWax Designs
www.lostwaxoz.com

