

UNIT C: Manufacturing Processes

Competency: D403.00

Demonstrate the basic concepts of the manufacturing processes.

Objective: D403.03.01

Demonstrate the skills needed in applying annotations to a drawing that best describes the manufacturing process.

Requirement:

Using the equipment provided, construct a working drawing that best describes the manufacturing processes required to produce the part, "The Adjustable Leg".

1. When plotted the drawing should fit on size "A" sheet of paper at a scale of 1:1.
2. Balance the drawing within the working area. Border and title block layout are to be assigned by the test Administrator.
3. Include your name, problem number (**D403.03.001**), scale, and date in the title block, as assigned by the test Administrator.
4. Save your work on the diskette provided or as directed by the test Administrator.
5. Time Limit = **90** minutes.
6. Dimension the drawing according to ANSI standards and add finish marks where required.
7. Use the following specifications for drawing set-up:
 - a. Units = Metric (mm)
 - b. Drawing Area (Limits) = Size "A" paper (11" X 8.5" landscape)
 - c. Title block & border layout are to be assigned by the test Administrator.

Assessment: The 2D CAD drawing should be evaluated based on the following criteria:

Criteria	Point Range
Drawing Set-up	10 points
Accuracy and Shape Representation	25 points
Feature Representation	30 points
Dimensioning and Annotations	25 points
Layout and Title Block Information	10 points

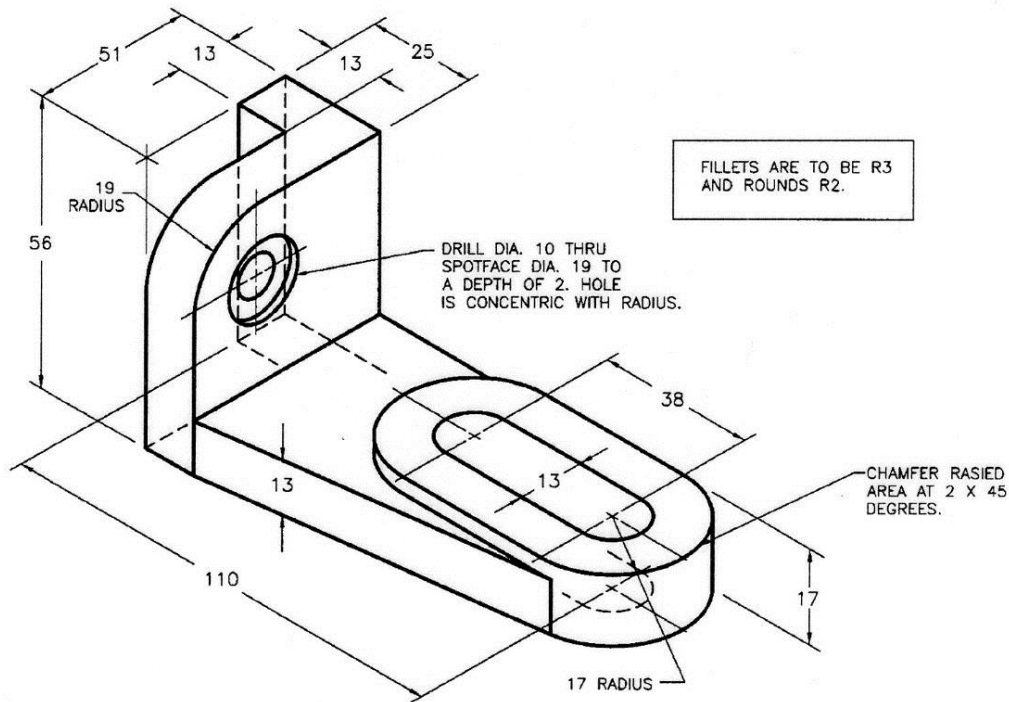
UNIT C: Manufacturing Processes

Competency: D403.00

Demonstrate the basic concepts of the manufacturing processes.

Objective: D403.03.01

Demonstrate the skills needed in applying annotations to a drawing that best describes the manufacturing process.



Part Information

Title: Adjustable Leg

Drawing Number: D403.03.01

Material: Cast Iron

Quantity: One Required

Manuf. Process: Sand Cast

Note

Fillets and rounds of the cast part apply to all edges, except where machining is required.

